

## Product datasheet for **AP02680PU-N**

### Myosin Light Chain 2 (MYL2) Rabbit Polyclonal Antibody

#### Product data:

Product Type:	Primary Antibodies
Applications:	IF, WB
Recommended Dilution:	<b>Western blot:</b> 1/500-1/1000. <b>Immunofluorescence:</b> 1/100-1/200.
Reactivity:	Human, Mouse, Rat
Host:	Rabbit
Clonality:	Polyclonal
Immunogen:	Peptide sequence around amino acids 17~21 (A-T-S-N-V) derived from Human Myosin Light Chain 2 Protein.
Specificity:	This antibody AP02680PU detects endogenous levels of total Myosin Light Chain 2 protein.
Formulation:	PBS (without Mg <sup>2+</sup> and Ca <sup>2+</sup> ), pH 7.4, 150 mM NaCl, 0.02% Sodium Azide and 50% Glycerol. State: Aff - Purified State: Liquid purified Ig fraction.
Concentration:	lot specific
Purification:	Immunoaffinity Chromatography using epitope-specific immunogen.
Conjugation:	Unconjugated
Storage:	Store undiluted at 2-8°C for one month or (in aliquots) at -20°C for longer. Avoid repeated freezing and thawing.
Stability:	Shelf life: one year from despatch.
Predicted Protein Size:	18 kDa (SDS-PAGE)
Gene Name:	myosin light chain 2
Database Link:	<a href="#">Entrez Gene 17906 Mouse</a> <a href="#">Entrez Gene 363925 Rat</a> <a href="#">Entrez Gene 4633 Human P10916</a>
Background:	Myosin light chain 2 (MYL2) encodes the regulatory light chain associated with cardiac myosin beta heavy chain. It is an important protein involved in the regulation of myosin ATPase activity in smooth muscle and Ca <sup>+</sup> triggers the phosphorylation of regulatory light chain that in turn triggers contraction. Mutations in MYL2 are associated with mid-left ventricular chamber type hypertrophic cardiomyopathy.

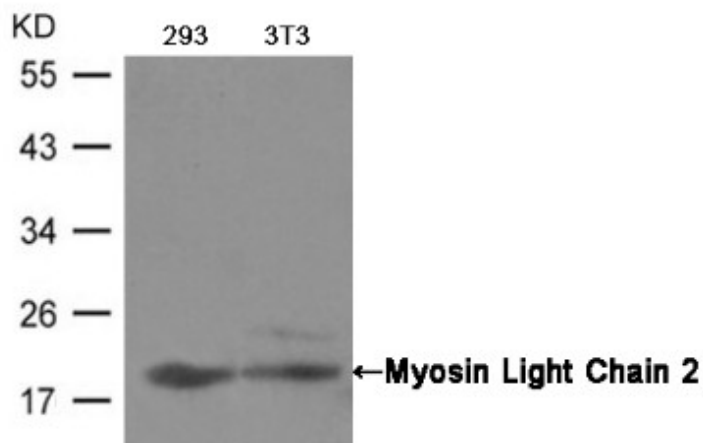


[View online »](#)

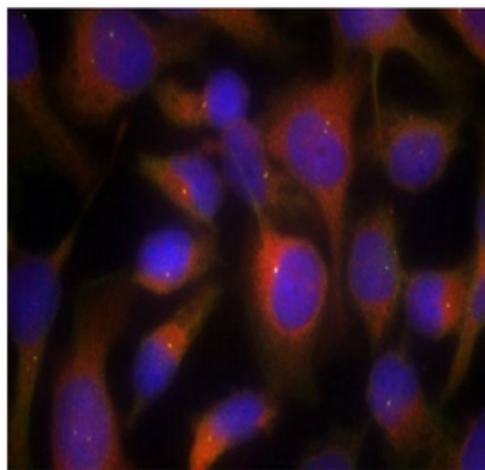
**Synonyms:** MLC-2v, MLC-2

**Protein Pathways:** Cardiac muscle contraction, Dilated cardiomyopathy, Focal adhesion, Hypertrophic cardiomyopathy (HCM), Leukocyte transendothelial migration, Regulation of actin cytoskeleton, Tight junction

**Product images:**



Western blot analysis of extracts from 293 and 3T3 cells using Myosin Light Chain 2 antibody



Immunofluorescence staining of methanol-fixed HeLa cells using Myosin Light Chain 2 antibody (Red).