

## Product datasheet for **AP02676PU-N**

### MEK6 (MAP2K6) Rabbit Polyclonal Antibody

#### Product data:

Product Type:	Primary Antibodies
Applications:	IF, IHC, WB
Recommended Dilution:	<b>Western blot:</b> 1/500-1/1000. Incubate membrane with diluted antibody in 5% nonfat milk, 1xTBS, 0.1% Tween-20 at 4°C with gentle shaking, overnight. <b>Immunofluorescence:</b> 1/100-1/200. <b>Immunohistochemistry on Paraffin Sections:</b> 1/50-1/100.
Reactivity:	Human
Host:	Rabbit
Clonality:	Polyclonal
Immunogen:	Peptide sequence around amino acids 205~209 (V-D-S-V-A) derived from Human MKK6.
Specificity:	This antibody AP02676PU detects endogenous levels of total MKK6 protein.
Formulation:	PBS (without Mg <sup>2+</sup> and Ca <sup>2+</sup> ), pH 7.4, 150 mM NaCl, 0.02% Sodium Azide and 50% Glycerol. State: Aff - Purified State: Liquid purified Ig fraction.
Concentration:	lot specific
Purification:	Immunoaffinity Chromatography using epitope-specific immunogen.
Conjugation:	Unconjugated
Storage:	Store the antibody (in aliquots) at -20°C. Avoid repeated freezing and thawing.
Stability:	Shelf life: One year from despatch.
Gene Name:	mitogen-activated protein kinase kinase 6
Database Link:	<a href="#">Entrez Gene 5608 Human P52564</a>



[View online »](#)

**Background:**

Mitogen activated protein kinase kinase 6 (MEK6 or MKK6) belongs to the serine/threonine protein kinase family and the MAPK kinase subfamily (MAP2K, MKK or MEKs). MEK6, closely related to MEK3, catalyzes the concomitant phosphorylation of a threonine and a tyrosine residue in MAP kinase p38, thus activating it, in response to inflammatory cytokines and environmental stress.

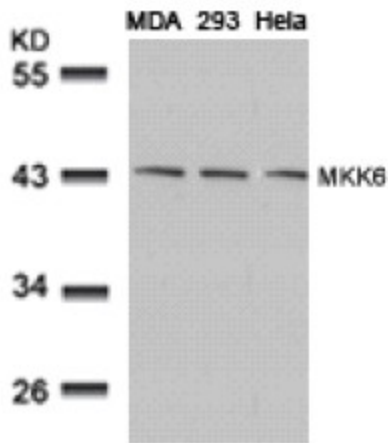
As an essential component of p38 MAP kinase mediated signal transduction pathway, this protein is involved in many cellular processes such as stress induced cell cycle arrest, transcription activation and apoptosis.

**Synonyms:**

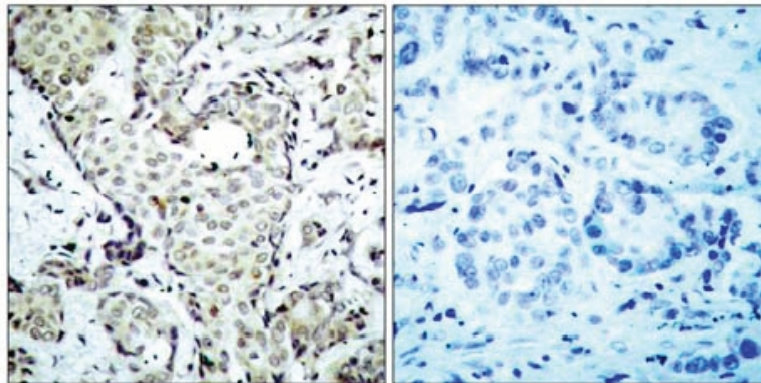
MAPKK 6, MAPK/ERK kinase 6, SAPKK3, MEK6, MKK6, MAP kinase kinase 6

**Note:**

Molecular Weight: 41 kDa

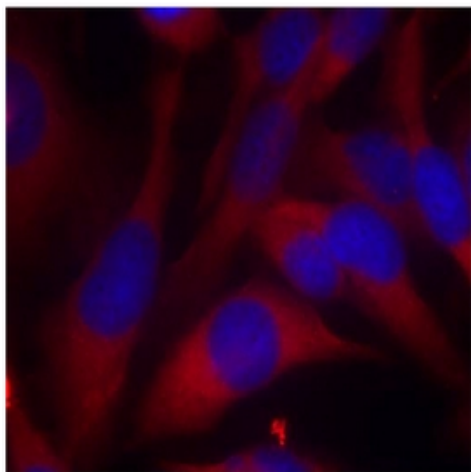
**Product images:**


Western Blot analysis of extracts from MDA, 293 and HeLa cells using MKK6 antibody



Immunohistochemical analysis of paraffin-embedded human breast carcinoma tissue, using MKK6 antibody.

Peptide                      -                      +



Immunofluorescence staining of methanol-fixed HeLa cells using MKK6 antibody (Red).