

Product datasheet for **AP02672PU-S**

CDC25C Rabbit Polyclonal Antibody

Product data:

Product Type:	Primary Antibodies
Applications:	IF, IHC, WB
Recommended Dilution:	Western blot: 1/500-1/1000. Immunofluorescence: 1/100-1/200. Immunohistochemistry on Paraffin-Embedded Sections: 1/50-1/100.
Reactivity:	Human
Host:	Rabbit
Clonality:	Polyclonal
Immunogen:	The antiserum was produced against synthesized non-phosphopeptide derived from human cdc25C around the phosphorylation site of serine 216 (S-P- <i>Sp</i> -M-P).
Specificity:	This antibody AP02672PU detects endogenous levels of total Cdc25C protein.
Formulation:	PBS (without Mg ²⁺ and Ca ²⁺), pH 7.4, 150 mM NaCl, 0.02% Sodium Azide and 50% Glycerol. State: Aff - Purified State: Liquid purified Ig fraction.
Concentration:	lot specific
Purification:	Immunoaffinity Chromatography using epitope-specific immunogen.
Conjugation:	Unconjugated
Storage:	Store the antibody (in aliquots) at -20°C. Avoid repeated freezing and thawing.
Stability:	Shelf life: One year from despatch.
Gene Name:	cell division cycle 25C
Database Link:	Entrez Gene 995 Human P30307



[View online »](#)

Background:

Cdc25C is a tyrosine phosphatase and belongs to the Cdc25 phosphatase family. It has been highly conserved during evolution and it plays a key role in the regulation of cell division. It directs dephosphorylation of cyclin B-bound CDC2 and triggers entry into mitosis. It is also thought to suppress p53-induced growth arrest. Cdc25C is mainly expressed in G2 phase. Multiple alternatively spliced transcript variants of this gene have been described, however, the full-length nature of many of them is not known.

Synonyms:

CDC25

Product images:

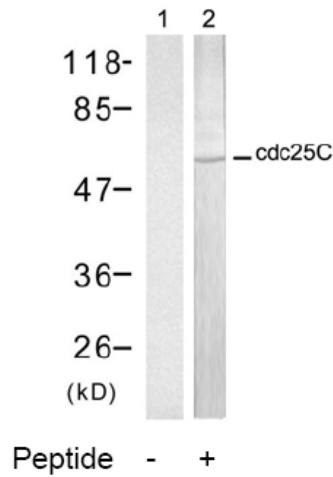


Figure 2. Western blot analysis of extract from HT-29 cells, using cdc25C antibody (Lane 1 and 2).

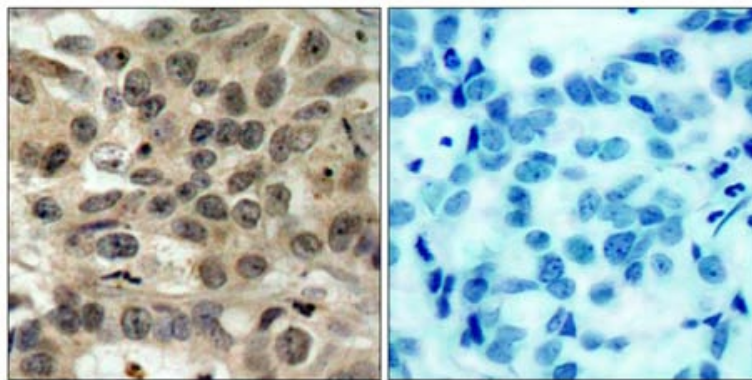
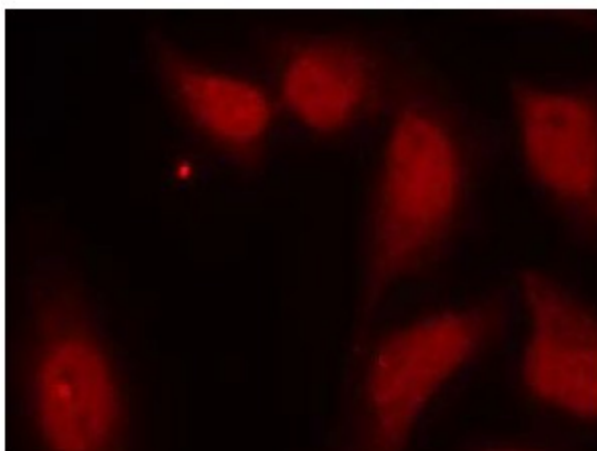


Figure 1. Immunohistochemical analysis of paraffin-embedded human breast carcinoma tissue, using cdc25C antibody.

Peptide - +



Immunofluorescence staining of methanol-fixed HeLa cells using cdc25C antibody