

Product datasheet for **AP02669PU-S**

HDAC5 Rabbit Polyclonal Antibody

Product data:

Product Type:	Primary Antibodies
Applications:	IHC, WB
Recommended Dilution:	Suitable for use in Western blot (1/500-1/1000) and Immunohistochemistry (1/50-1/100).
Reactivity:	Human
Host:	Rabbit
Clonality:	Polyclonal
Immunogen:	Peptide Sequence around amino acids 496~500 (T-Q-S-S-P) derived from Human HDAC5.
Specificity:	HDAC5 antibody AP02669PU detects endogenous levels of total HDAC5 protein.
Formulation:	PBS (without Mg ²⁺ and Ca ²⁺), pH 7.4, 150 mM NaCl, 0.02% Sodium Azide and 50% Glycerol. State: Aff - Purified State: Liquid purified Ig fraction.
Concentration:	lot specific
Purification:	Immunoaffinity Chromatography using epitope-specific immunogen.
Conjugation:	Unconjugated
Storage:	Store the antibody (in aliquots) at -20°C. Avoid repeated freezing and thawing.
Stability:	Shelf life: One year from despatch.
Gene Name:	histone deacetylase 5
Database Link:	Entrez Gene 10014 Human Q9UQL6
Background:	HDAC5 is a member of the class II mammalian histone deacetylase family, which is structurally related to yeast HDA1. Human HDAC5 is composed of 1122 amino acid residues. The deacetylase domain of HDAC5 is located at the C-terminal half of the molecule. The N-terminal non-deacetylase domain does not show any significant homology with any published sequence. Both domains are required for HDAC5-mediated repression of gene transcription. HDAC5 interacts with a growing number of transcriptional factors including MEF2A as well as other HDAC proteins. The interacting complexes bind to specific regions of chromatin and regulate gene transcription in these regions.



[View online »](#)

Synonyms: Histone deacetylase 5, HD5, KIAA0600, Antigen NY-CO-9

Note: Molecular Weight: 124 kDa

Product images:

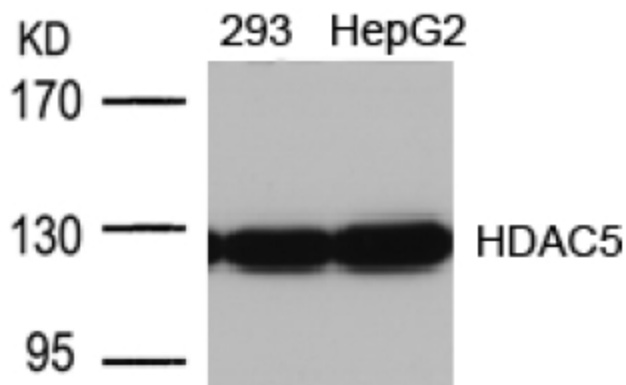


Figure 2. Western blot analysis of extract from 293 and HepG2 cells using HDAC5 antibody.

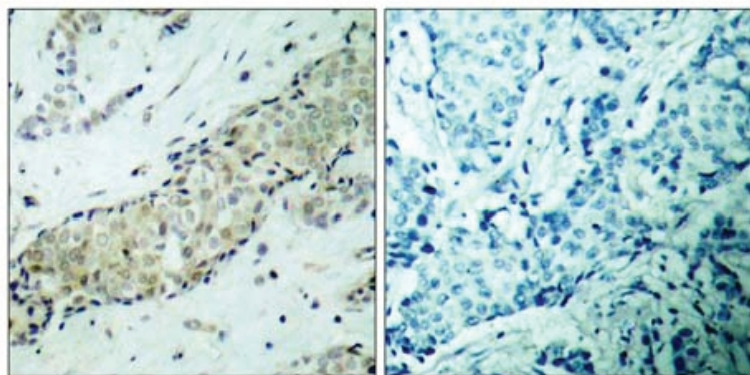


Figure 1. Immunohistochemical analysis of paraffin- embedded Human breast carcinoma tissue, using HDAC5 Antibody. (Left) or the same antibody preincubated with blocking peptide (Right).

Peptide - +