

## Product datasheet for **AP02667PU-S**

### HDAC2 Rabbit Polyclonal Antibody

#### Product data:

Product Type:	Primary Antibodies
Applications:	IF, IHC, WB
Recommended Dilution:	<b>Western blot:</b> 1/500-1/1000. Incubate membrane with diluted antibody in 5% nonfat milk, 1X TBS, 0,1% Tween-20 at 4°C with gentle shaking, overnight. <b>Immunofluorescence:</b> 1/100-1/200. <b>Immunohistochemistry on Paraffin-Embedded Sections:</b> 1/50-1/100.
Reactivity:	Human, Mouse, Rat
Host:	Rabbit
Clonality:	Polyclonal
Immunogen:	Peptide sequence around amino acids 392~396 (E-D-S-G-D) derived from Human HDAC2.
Specificity:	This antibody detects endogenous levels of total HDAC2 protein.
Formulation:	PBS (without Mg <sup>2+</sup> and Ca <sup>2+</sup> ), pH 7.4, containing 150 mM NaCl, 0.02% Sodium Azide and 50% Glycerol. State: Aff - Purified State: Liquid purified IgG fraction.
Concentration:	lot specific
Purification:	Affinity Chromatography using epitope-specific immunogen.
Conjugation:	Unconjugated
Storage:	Store the antibody (in aliquots) at -20°C. Avoid repeated freezing and thawing.
Stability:	Shelf life: One year from despatch.
Gene Name:	histone deacetylase 2
Database Link:	<a href="#">Entrez Gene 3066 Human Q92769</a>



[View online »](#)

**Background:**

Histone deacetylase 2 (HDAC2), or transcriptional regulator homolog RPD3 L1, is highly homologous to the yeast transcription factor RPD3 (reduced potassium dependency 3) gene. As in yeast, human HDA2 is likely to be involved in regulating chromatin structure during transcription. It has been implicated to associate with YY1, a mammalian zinc-finger transcription factor, which negatively regulates transcription by tethering RPD3 to DNA as a cofactor. This process is highly conserved from yeast to human.

**Synonyms:**

Histone deacetylase 2, HD2

**Note:**

Molecular Weight: 60 kDa

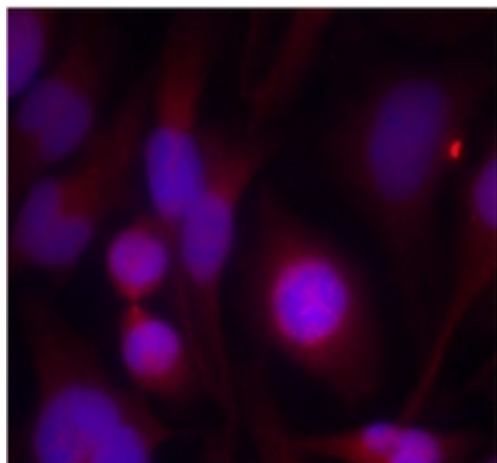
**Product images:**


Figure 2. Western blot analysis of extracts from HT-29 cells untreated or treated with UV (20min), using HDAC2 antibody (Lane 1 and 2) and HDAC2 (Phospho-Ser394) antibody (Lane 3 and 4).

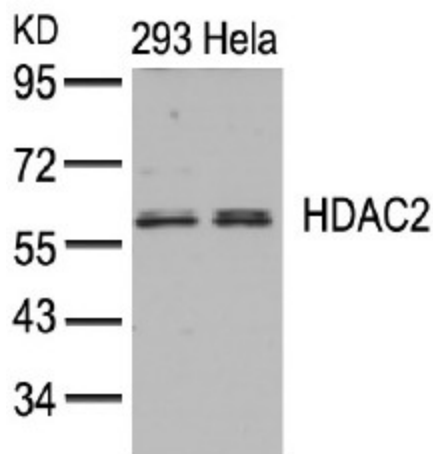
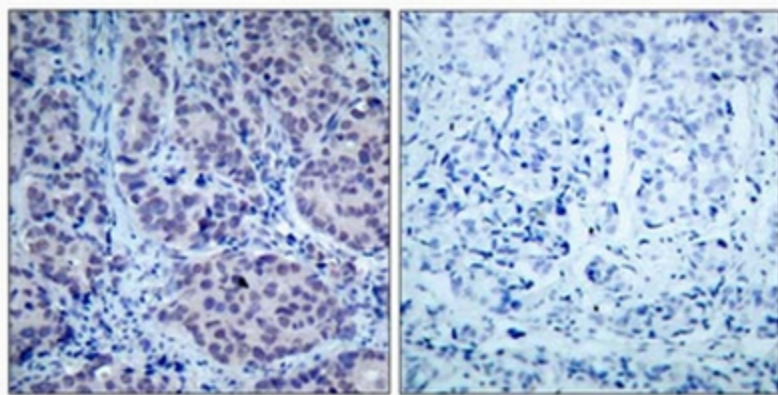


Figure 3 Western Blot analysis of extracts from 293 and HeLa cells using HDAC2 antibody



Peptide

-

+

Figure 1. Immunohistochemical analysis of paraffin- embedded human breast carcinoma tissue using HDAC2 antibody.