

## Product datasheet for **AP02666PU-S**

### **FOXO1 (254-258) Rabbit Polyclonal Antibody**

#### **Product data:**

Product Type:	Primary Antibodies
Applications:	IF, IHC, WB
Recommended Dilution:	<b>Western blot:</b> 1/500-1/1000. Incubate membrane with diluted antibody in 5% nonfat milk, 1x TBS, 0.1% Tween-20 at 4°C with gentle shaking, overnight. <b>Immunofluorescence:</b> 1/100-1/200. <b>Immunohistochemistry on Paraffin sections:</b> 1/50-1/100.
Reactivity:	Human
Host:	Rabbit
Clonality:	Polyclonal
Immunogen:	Peptide Sequence around amino acids 254~258 (A-A-S-M-D) derived from Human FKHR/FOXO1A
Specificity:	This antibody detects endogenous levels of total FKHR protein.
Formulation:	PBS (without Mg <sup>2+</sup> and Ca <sup>2+</sup> ), pH 7.4, 150 mM NaCl, 0.02% Sodium Azide and 50% Glycerol. State: Aff - Purified State: Liquid purified Ig fraction.
Concentration:	lot specific
Purification:	Immunoaffinity Chromatography using epitope-specific immunogen.
Conjugation:	Unconjugated
Storage:	Store the antibody (in aliquots) at -20°C. Avoid repeated freezing and thawing.
Stability:	Shelf life: One year from despatch.
Predicted Protein Size:	78-82 KDa
Gene Name:	forkhead box O1
Database Link:	<a href="#">Entrez Gene 2308 Human Q12778</a>



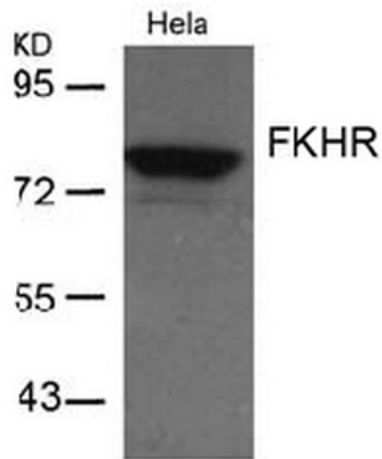
[View online »](#)

**Background:**

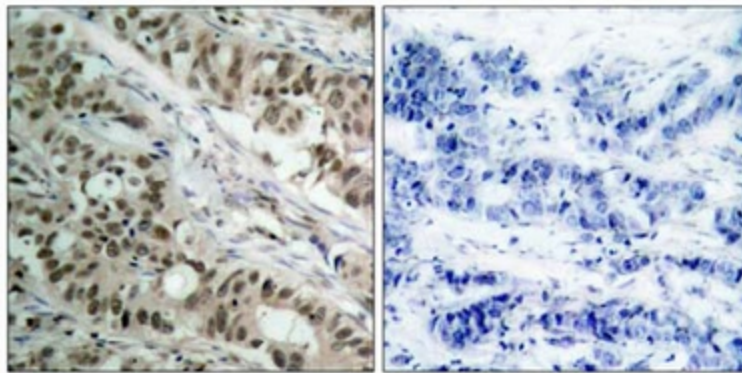
FOXO1A (FKHR or ForkHead in Rhabdomyosarcoma) is a 70 kDa protein which is a member of a subfamily of the forkhead homeotic gene family of transcription factors. Recent studies have shown that this protein can act as either a coactivator or a corepressor of nuclear receptor activity. This action is mediated through the LXXLL motif found in the C terminus of the FOXO1A protein. The specific function of the gene has not yet been determined; however, it may play a role in myogenic growth and differentiation. Chromosomal aberrations involving FOXO1A are a cause of rhabdomyosarcoma 2 (RMS2); also known as alveolar rhabdomyosarcoma.

**Synonyms:**

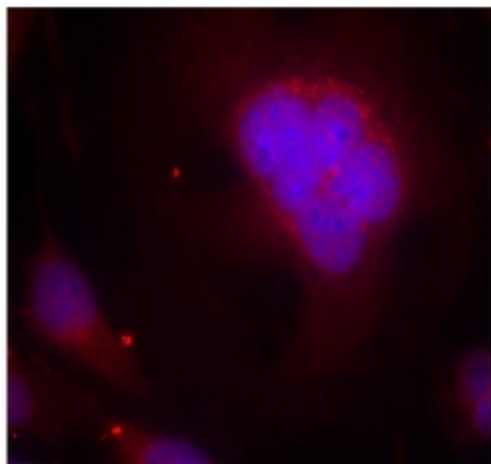
Forkhead Box Protein O1, FOXO1, FKHR

**Product images:**


Western Blot analysis of extracts from HeLa cells using FKHR antibody



Immunohistochemical analysis of paraffin-embedded human breast carcinoma tissue using FKHR antibody.



Immunofluorescence staining of methanol-fixed HeLa cells using FKHR antibody (Red).