

## Product datasheet for **AP02664PU-S**

### **RSK1 p90 (RPS6KA1) Rabbit Polyclonal Antibody**

#### **Product data:**

|                              |   |
|------------------------------|---|
| <b>Product Type:</b>         | Primary Antibodies  |
| <b>Applications:</b>         | WB  |
| <b>Recommended Dilution:</b> | Suitable for use in Western blot (1:500-1:1000).  |
| <b>Reactivity:</b>           | Human, Mouse  |
| <b>Host:</b>                 | Rabbit  |
| <b>Clonality:</b>            | Polyclonal  |
| <b>Immunogen:</b>            | The antiserum was produced against synthesized non-phosphopeptide derived from mouse p90RSK around the phosphorylation site of serine 352 (R-D- <i>Sp</i> -P-G).                            |
| <b>Specificity:</b>          | The antibody was affinity-purified from rabbit antiserum by affinity-chromatography using epitope-specific immunogen.<br>p90RSK antibody detects endogenous levels of total p90RSK protein. |
| <b>Formulation:</b>          | PBS (without Mg <sup>2+</sup> and Ca <sup>2+</sup> ), pH 7.4, 150 mM NaCl, 0.02% Sodium Azide and 50% Glycerol.<br>State: Aff - Purified<br>State: Liquid purified Ig fraction.             |
| <b>Concentration:</b>        | lot specific  |
| <b>Purification:</b>         | Immunoaffinity chromatography.  |
| <b>Conjugation:</b>          | Unconjugated  |
| <b>Storage:</b>              | Store the antibody (in aliquots) at -20°C.<br>Avoid repeated freezing and thawing.  |
| <b>Stability:</b>            | Shelf life: One year from despatch.   |
| <b>Gene Name:</b>            | ribosomal protein S6 kinase A1  |
| <b>Database Link:</b>        | <a href="#">Entrez Gene 6195 Human Q15418</a>   |
| <b>Synonyms:</b>             | Ribosomal S6 kinase 1, 90 kDa ribosomal protein S6 kinase 1, MAPKAPK1A, RSK1, RSK-1, p90RSK1  |



[View online »](#)

## Product images:

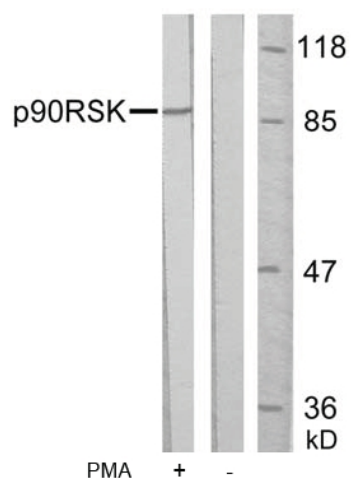


Figure 1. Western blot analysis of extract from HeLa cells, untreated or treated with PMA (200 nM, 30 min), using p90RSK antibody.