

Product datasheet for **AP02663PU-S**

RSK1 p90 (RPS6KA1) Rabbit Polyclonal Antibody

Product data:

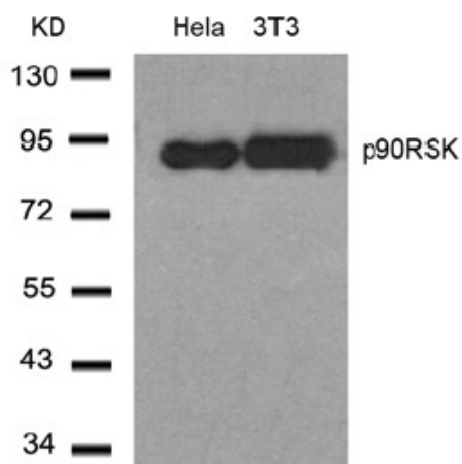
Product Type:	Primary Antibodies
Applications:	IF, WB
Recommended Dilution:	Western blot: 1/500-1/1000. Immunofluorescence: 1/100-1/200.
Reactivity:	Human, Mouse, Rat
Host:	Rabbit
Clonality:	Polyclonal
Immunogen:	The antiserum was produced against synthesized non-phosphopeptide derived from mouse p90RSK around the phosphorylation site of threonine 348 (S-R-Tp-P-R).
Specificity:	This antibody detects endogenous levels of total p90RSK protein.
Formulation:	PBS (without Mg ²⁺ and Ca ²⁺), pH 7.4, 150 mM NaCl, 0.02% Sodium Azide and 50% Glycerol. State: Aff - Purified State: Liquid purified Ig fraction.
Concentration:	lot specific
Purification:	Immunoaffinity Chromatography using epitope-specific immunogen.
Conjugation:	Unconjugated
Storage:	Store the antibody (in aliquots) at -20°C. Avoid repeated freezing and thawing.
Stability:	Shelf life: One year from despatch.
Gene Name:	ribosomal protein S6 kinase A1
Database Link:	Entrez Gene 6195 Human Q15418
Background:	Rsk1 is a member of a family of 90kDa ribosomal protein S6 kinases, which includes Rsk1, Rsk2 and Rsk3. These are broadly expressed serine/threonine protein kinases activated in response to mitogenic stimuli, including extracellular signal regulated protein kinases Erk1 and Erk2. Rsk1 is activated by MAPK in vitro and in vivo via phosphorylation. Active Rsk1 appear to play a major role in transcriptional regulation by translocating to the nucleus and phosphorylating c Fos and CREB.



[View online »](#)

Synonyms: Ribosomal S6 kinase 1, 90 kDa ribosomal protein S6 kinase 1, MAPKAPK1A, RSK1, RSK-1, p90RSK1

Product images:



Western Blot analysis of extracts from HeLa and 3T3 cells using p90RSK antibody

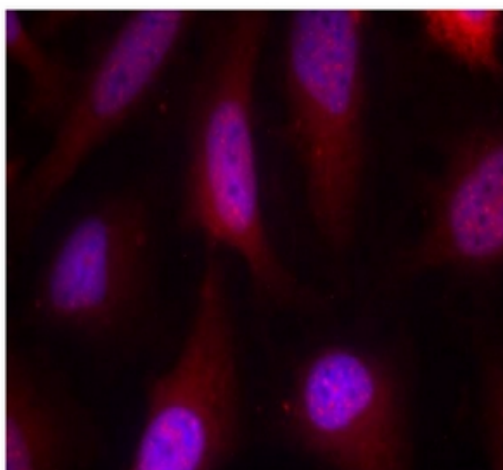


Figure 2. Immunofluorescence staining of methanol-fixed HeLa cells using p90RSK antibody (Red).