

Product datasheet for **AP02661PU-S**

MEK4 (MAP2K4) Rabbit Polyclonal Antibody

Product data:

Product Type:	Primary Antibodies
Applications:	IHC, WB
Recommended Dilution:	Suitable for use in Western blot (1:500-1:1000) and Immunohistochemistry (1:50-1:100).
Reactivity:	Mouse
Host:	Rabbit
Clonality:	Polyclonal
Immunogen:	The antiserum was produced against synthesized non-phosphopeptide derived from human SEK1/MKK4 around the phosphorylation site of serine 80 (T-H-Sp-I-E).
Specificity:	The antibody was affinity-purified from rabbit antiserum by affinity-chromatography using epitope-specific immunogen. SEK1/MKK4 antibody detects endogenous levels of total SEK1/MKK4 protein.
Formulation:	PBS (without Mg ²⁺ and Ca ²⁺), pH 7.4, 150 mM NaCl, 0.02% Sodium Azide and 50% Glycerol. State: Aff - Purified State: Liquid purified Ig fraction.
Concentration:	lot specific
Purification:	Immunoaffinity chromatography.
Conjugation:	Unconjugated
Storage:	Store the antibody (in aliquots) at -20°C. Avoid repeated freezing and thawing.
Stability:	Shelf life: One year from despatch.
Gene Name:	mitogen-activated protein kinase kinase 4
Database Link:	P45985
Background:	MEK4 is a dual specificity protein kinase that belongs to the Ser/Thr protein kinase family. This kinase is a direct activator of MAP kinases in response to various environmental stresses or mitogenic stimuli. It has been shown to activate MAPK8 / JNK1, MAPK9 / JNK2, and MAPK14 / p38, but not MAPK1 / ERK2 or MAPK3 / ERK3. This kinase is phosphorylated, and thus activated by MAP3K1 / MEKK. The knockout studies in mice suggested the roles of this kinase in mediating survival signal in T cell development, as well as in the organogenesis of liver.



[View online »](#)

Synonyms: JNK-activating kinase 1, MAP Kinase Kinase 4, SAPK/ERK kinase 1, PRKMK4, SERK1, MEK-4, MAPKK4, MKK4

Product images:

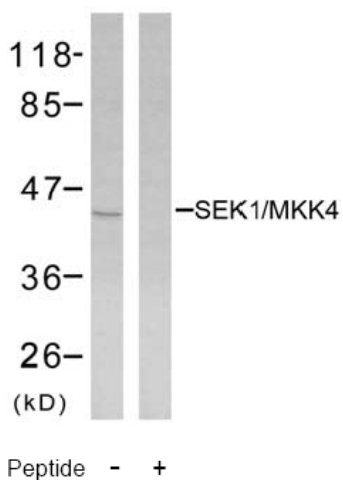


Figure 2. Western blot analysis of extracts from NIH/3T3 cells using SEK1/MKK4 antibody AP02661PU.

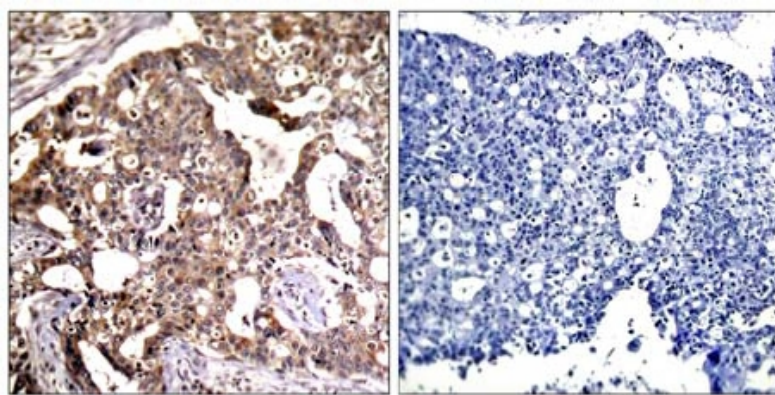


Figure 1. Immunohistochemical analysis of paraffin-embedded human breast carcinoma tissue, using SEK1/MKK4 antibody AP02661PU.

Peptide - +