

## Product datasheet for **AP02658PU-S**

### Phospholipase C gamma 1 (PLCG1) Rabbit Polyclonal Antibody

#### Product data:

|                       |                                                                                                                                                                                           |
|-----------------------|-------------------------------------------------------------------------------------------------------------------------------------------------------------------------------------------|
| Product Type:         | Primary Antibodies                                                                                                                                                                        |
| Applications:         | WB                                                                                                                                                                                        |
| Recommended Dilution: | Suitable for use in Western blot (1:500-1:1000).                                                                                                                                          |
| Reactivity:           | Human, Mouse                                                                                                                                                                              |
| Host:                 | Rabbit                                                                                                                                                                                    |
| Clonality:            | Polyclonal                                                                                                                                                                                |
| Immunogen:            | The antiserum was produced against synthesized non-phosphopeptide derived from human PLCy1 around the phosphorylation site of tyrosine 783 (G-F-Y $\rho$ -V-E).                           |
| Specificity:          | The antibody was affinity-purified from rabbit antiserum by affinity-chromatography using epitope-specific immunogen.<br>PLCy1 antibody detects endogenous levels of total PLCy1 protein. |
| Formulation:          | PBS (without Mg <sup>2+</sup> and Ca <sup>2+</sup> ), pH 7.4, 150 mM NaCl, 0.02% Sodium Azide and 50% Glycerol.<br>State: Aff - Purified<br>State: Liquid purified Ig fraction.           |
| Concentration:        | lot specific                                                                                                                                                                              |
| Purification:         | Immunoaffinity chromatography.                                                                                                                                                            |
| Conjugation:          | Unconjugated                                                                                                                                                                              |
| Storage:              | Store the antibody (in aliquots) at -20°C.<br>Avoid repeated freezing and thawing.                                                                                                        |
| Stability:            | Shelf life: One year from despatch.                                                                                                                                                       |
| Gene Name:            | phospholipase C gamma 1                                                                                                                                                                   |
| Database Link:        | <a href="#">Entrez Gene 5335 Human P19174</a>                                                                                                                                             |
| Synonyms:             | PLC1, Phospholipase C-gamma-1, PLC-gamma-1, PLC gamma1 Phospholipase C-II, PLC-II, PLC-148                                                                                                |



[View online »](#)

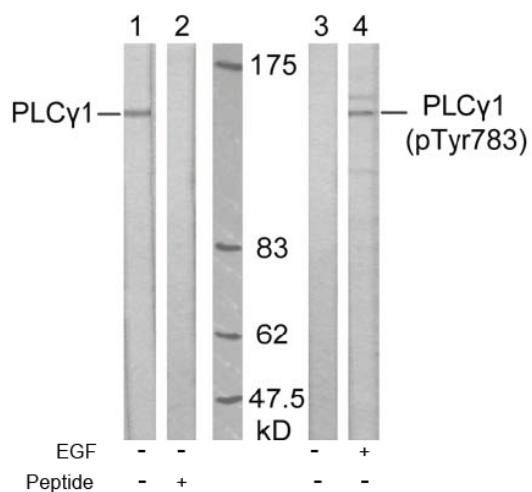
**Product images:**


Figure 1. Western blot analysis of extract from A431 cells, untreated or treated with EGF (200 ng/ml, 10 min), using PLCγ1 antibody (Lane 1 and 2) and PLCγ1 (phospho-Tyr783) antibody (Lane 3 and 4).