

Product datasheet for **AP02657PU-S**

PKC mu (PRKD1) Rabbit Polyclonal Antibody

Product data:

Product Type:	Primary Antibodies
Applications:	WB
Recommended Dilution:	Suitable for use in Western blot (1:500-1:1000).
Reactivity:	Human, Mouse, Rat
Host:	Rabbit
Clonality:	Polyclonal
Immunogen:	The antiserum was produced against synthesized non-phosphopeptide derived from human PKD/PKC μ around the phosphorylation site of serine 910 (R-V-Sp-I-L).
Specificity:	The antibody was affinity-purified from rabbit antiserum by affinity-chromatography using epitope-specific immunogen. PKD/PKC μ antibody detects endogenous levels of total PKD/PKC μ protein.
Formulation:	PBS (without Mg ²⁺ and Ca ²⁺), pH 7.4, 150 mM NaCl, 0.02% Sodium Azide and 50% Glycerol. State: Aff - Purified State: Liquid purified Ig fraction.
Concentration:	lot specific
Purification:	Immunoaffinity chromatography.
Conjugation:	Unconjugated
Storage:	Store the antibody (in aliquots) at -20°C. Avoid repeated freezing and thawing.
Stability:	Shelf life: One year from despatch.
Gene Name:	protein kinase D1
Database Link:	Entrez Gene 5587 Human Q15139
Synonyms:	Protein kinase D, PKC D1, PKD, PKD1, PRKCM, nPKC-D1, nPKC-mu, PKC mu, Protein kinase C mu type



[View online »](#)

Product images:

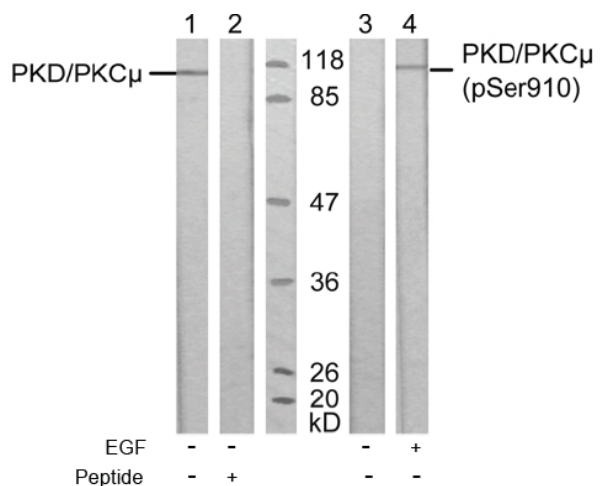


Figure 1. Western blot analysis of extract from A431 cells, untreated or treated with EGF (200 ng/ml, 10 min), using PKD/PKC μ antibody (Lane 1 and 2) and PKD/PKC μ (phospho-Ser910) antibody (Lane 3 and 4).