

## Product datasheet for **AP02649PU-S**

### JAK1 Rabbit Polyclonal Antibody

#### Product data:

Product Type:	Primary Antibodies
Applications:	IHC, WB
Recommended Dilution:	Suitable for use in Western blot (1:500-1:1000) and Immunohistochemistry (1:50-1:100).
Reactivity:	Human, Mouse, Rat
Host:	Rabbit
Clonality:	Polyclonal
Immunogen:	The antiserum was produced against synthesized non-phosphopeptide derived from human JAK1 around the phosphorylation site of tyrosine 1022 (K-E-Yp-Y-T).
Specificity:	The antibody was affinity-purified from rabbit antiserum by affinity-chromatography using epitope-specific immunogen. JAK1 antibody detects endogenous levels of total JAK1 protein.
Formulation:	PBS (without Mg <sup>2+</sup> and Ca <sup>2+</sup> ), pH 7.4, 150 mM NaCl, 0.02% Sodium Azide and 50% Glycerol. State: Aff - Purified State: Liquid purified Ig fraction.
Concentration:	lot specific
Purification:	Immunoaffinity chromatography.
Conjugation:	Unconjugated
Storage:	Store the antibody (in aliquots) at -20°C. Avoid repeated freezing and thawing.
Stability:	Shelf life: One year from despatch.
Gene Name:	Janus kinase 1
Database Link:	<a href="#">Entrez Gene 3716 Human P23458</a>
Synonyms:	Janus kinase 1, JAK-1, JAK1A, JAK1B



[View online »](#)

Product images:

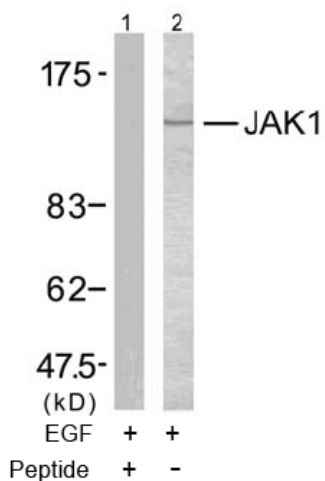


Figure 2. Western blot analysis of extracts from MCF7 cells using JAK1 antibody.

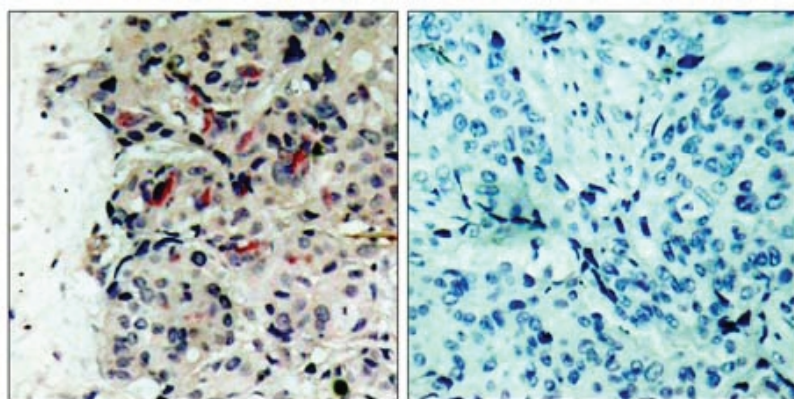


Figure 1. Immunohistochemical analysis of paraffin-embedded human breast carcinoma tissue using JAK1 antibody.

Peptide                      -                      +