

## Product datasheet for **AP02648PU-N**

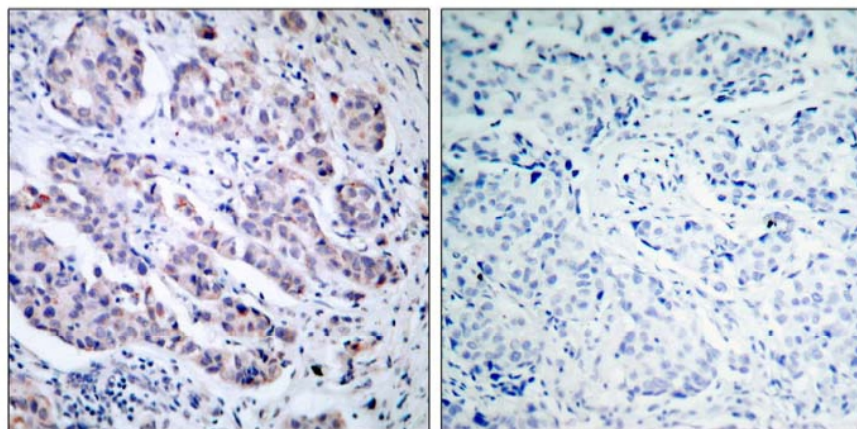
### TYK2 Rabbit Polyclonal Antibody

#### Product data:

|                       |  |
|-----------------------|--|
| Product Type:         | Primary Antibodies   |
| Applications:         | IHC  |
| Recommended Dilution: | Suitable for use in Immunohistochemistry (1:50-1:100).   |
| Reactivity:           | Mouse  |
| Host:                 | Rabbit   |
| Clonality:            | Polyclonal   |
| Immunogen:            | The antiserum was produced against synthesized non-phosphopeptide derived from human TYK2 around the phosphorylation site of tyrosine 1054 (H-E-Y $\rho$ -Y-R).  |
| Specificity:          | The antibody was affinity-purified from rabbit antiserum by affinity-chromatography using epitope-specific immunogen.<br>TYK2 antibody detects endogenous levels of TYK2 protein around tyrosine 1054. |
| Formulation:          | PBS (without Mg <sup>2+</sup> and Ca <sup>2+</sup> ), pH 7.4, 150 mM NaCl, 0.02% Sodium Azide and 50% Glycerol.<br>State: Aff - Purified<br>State: Liquid purified Ig fraction.                        |
| Concentration:        | lot specific   |
| Purification:         | Immunoaffinity chromatography.   |
| Conjugation:          | Unconjugated   |
| Storage:              | Store the antibody (in aliquots) at -20°C.<br>Avoid repeated freezing and thawing.   |
| Stability:            | Shelf life: One year from despatch.  |
| Gene Name:            | tyrosine kinase 2  |
| Database Link:        | <a href="#">P29597</a>   |
| Synonyms:             | JTK1   |



[View online »](#)

**Product images:**

Peptide

-

+

Figure 1. Immunohistochemical analysis of paraffin-embedded human breast carcinoma tissue, using TYK2 antibody AP02648PU.