

## Product datasheet for **AP02647PU-S**

### MEK3 (MAP2K3) Rabbit Polyclonal Antibody

#### Product data:

Product Type:	Primary Antibodies
Applications:	IF, IHC, WB
Recommended Dilution:	<b>Western blot:</b> 1/500-1/1000. Incubate membrane with diluted antibody in 5% nonfat milk, 1X TBS, 0,1% Tween-20 at 4°C with gentle shaking, overnight. <b>Immunohistochemistry on Paraffin Sections:</b> 1/50-1/100. <b>Immunofluorescence:</b> 1/100-1/200.
Reactivity:	Human, Rat, Mouse
Host:	Rabbit
Clonality:	Polyclonal
Immunogen:	Peptide sequence around amino acids 187~191 (V-D-S-V-A) derived from Human MKK3.
Specificity:	This MKK3 antibody Cat.-No AP02647PU detects endogenous levels of total MKK3 protein.
Formulation:	PBS (without Mg <sup>2+</sup> and Ca <sup>2+</sup> ), pH 7.4, 150 mM NaCl, 0.02% Sodium Azide and 50% Glycerol State: Aff - Purified State: Liquid purified Ig fraction
Concentration:	lot specific
Purification:	Affinity Chromatography using epitope-specific peptide
Conjugation:	Unconjugated
Storage:	Upon receipt, store undiluted (in aliquots) at -20°C. Avoid repeated freezing and thawing.
Stability:	Shelf life: one year from despatch.
Predicted Protein Size:	40 kDa (Predicted)
Gene Name:	mitogen-activated protein kinase kinase 3
Database Link:	<a href="#">Entrez Gene 5606 Human P46734</a>



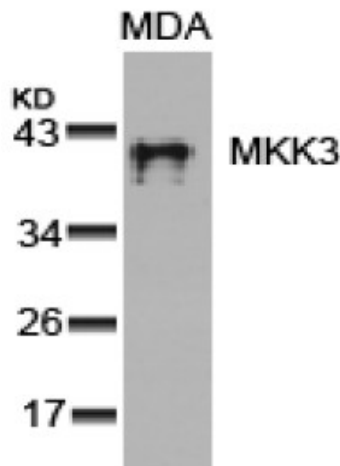
[View online »](#)

**Background:**

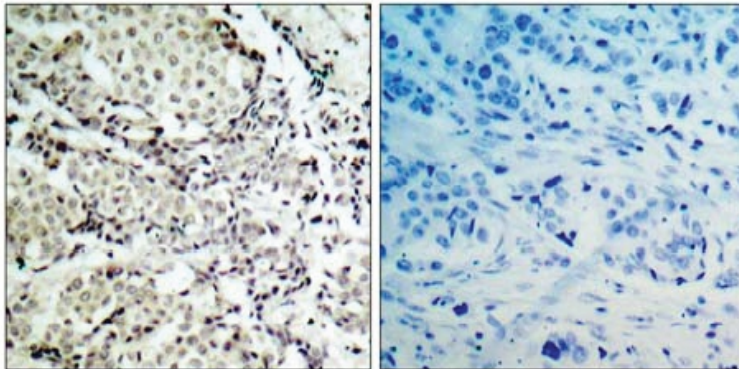
MEK3 is a dual specificity protein kinase that belongs to the MAP kinase kinase family. This kinase is activated by mitogenic and environmental stress, and participates in the MAP kinase-mediated signaling cascade. It phosphorylates and thus activates MAPK14/p38-MAPK. This kinase can be activated by insulin, and is necessary for the expression of glucose transporter. Expression of RAS oncogene is found to result in the accumulation of the active form of this kinase, which thus leads to the constitutive activation of MAPK14, and confers oncogenic transformation of primary cells. The inhibition of this kinase is involved in the pathogenesis of Yersina pseudotuberculosis. Three alternatively spliced transcript variants of this gene encoding distinct isoforms have been reported.

**Synonyms:**

MAPKK 3, MEK3, MKK3, MAP kinase kinase 3

**Product images:**


Western Blot analysis of extracts from MDA cells using MKK3 antibody

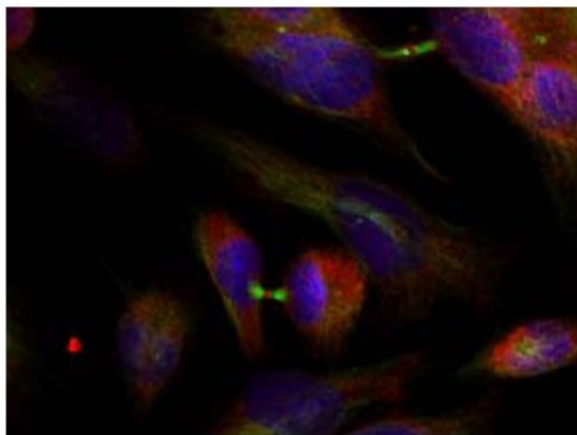


Peptide

-

+

Figure 1. Immunohistochemical analysis of paraffin- embedded human breast carcinoma tissue, using MKK3 antibody.



Immunofluorescence staining of methanol-fixed HeLa cells using MKK3 antibody