

## Product datasheet for **AP02645PU-S**

### Chk1 (CHEK1) Rabbit Polyclonal Antibody

#### Product data:

Product Type:	Primary Antibodies
Applications:	IHC, WB
Recommended Dilution:	Suitable for use in Western blot (1:500-1:1000) and Immunohistochemistry (1:50-1:100).
Reactivity:	Human
Host:	Rabbit
Clonality:	Polyclonal
Immunogen:	The antiserum was produced against synthesized non-phosphopeptide derived from human Chk1 around the phosphorylation site of serine 317 (S-S-Sp-Q-P)
Specificity:	The antibody was affinity-purified from rabbit antiserum by affinity-chromatography using epitope-specific immunogen. Chk1 antibody AP02645PU detects endogenous levels of total Chk1 protein.
Formulation:	PBS (without Mg <sup>2+</sup> and Ca <sup>2+</sup> ), pH 7.4, 150 mM NaCl, 0.02% Sodium Azide and 50% Glycerol. State: Aff - Purified State: Liquid purified Ig fraction.
Concentration:	lot specific
Purification:	Immunoaffinity chromatography.
Conjugation:	Unconjugated
Storage:	Store the antibody (in aliquots) at -20°C. Avoid repeated freezing and thawing.
Stability:	Shelf life: One year from despatch.
Gene Name:	checkpoint kinase 1
Database Link:	<a href="#">Entrez Gene 1111 Human</a> <a href="#">O14757</a>



[View online »](#)

**Background:**

One mechanism by which checkpoints maintain the fidelity of cell cycle events is through blocking mitosis in response to unreplicated or damaged DNA. In most species this occurs through inhibiting activation of the cyclic dependent kinase Cdc2, which regulates entry into mitosis. Chk1, a kinase involved in the DNA damage checkpoint response can phosphorylate Cdc25C an activator of Cdc2. It is hypothesized that Chk1 induces serine 216 phosphorylation of Cdc25C and subsequent 14-3-3 binding negatively regulated Cdc25C, thus preventing it from activating Cdc2.

**Synonyms:**

CHEK1, CHEK-1

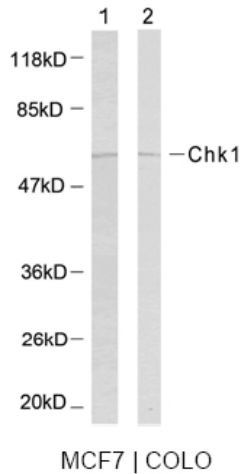
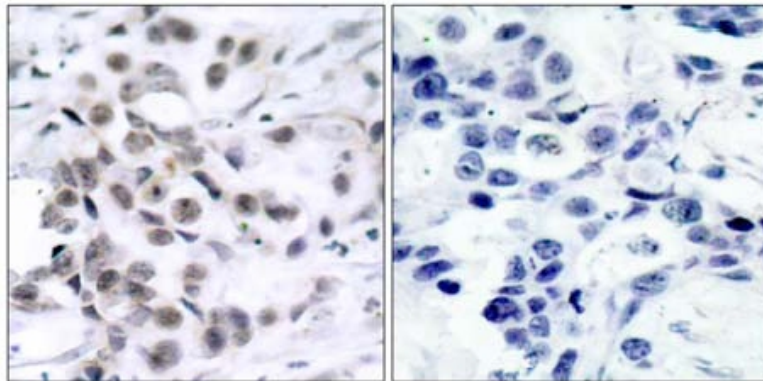
**Product images:**


Figure 2. Western blot analysis of the extracts using Chk1 antibody AP02645PU.



Peptide

-

+

Figure 1. Immunohistochemical analysis of paraffin-embedded human breast carcinoma tissue using Chk1 antibody AP02645PU.