

Product datasheet for **AP02643PU-S**

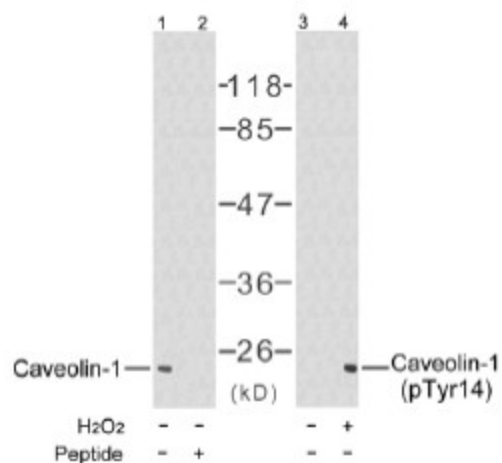
Caveolin 1 (CAV1) Rabbit Polyclonal Antibody

Product data:

Product Type:	Primary Antibodies
Applications:	WB
Recommended Dilution:	Western blot: (1:500 - 1:1000).
Reactivity:	Human, Mouse, Rat
Host:	Rabbit
Clonality:	Polyclonal
Immunogen:	Synthesized non-phosphopeptide derived from human Caveolin-1 around the phosphorylation site of tyrosine 14
Specificity:	This antibody detects endogenous levels of total Caveolin-1 protein.
Formulation:	Phosphate buffered saline (without Mg ²⁺ and Ca ²⁺), pH 7.4, 150mM NaCl, 0.02% sodium azide and 50% glycerol. State: Aff - Purified State: Liquid Ig fraction
Concentration:	lot specific
Purification:	Affinity-chromatography using epitope-specific immunogen
Conjugation:	Unconjugated
Storage:	Store (in aliquots) at -20 °C. Avoid repeated freezing and thawing.
Stability:	Shelf life: one year from despatch.
Gene Name:	caveolin 1
Database Link:	Entrez Gene 857 Human Q03135
Synonyms:	CAV1



[View online »](#)

Product images:


Western blot analysis of the extracts from NIH/3T3 cells untreated or treated with H₂O₂ using Caveolin-1 antibody (Lane 1 and 2) and Caveolin-1 (phospho-Tyr14) antibody (Lane 3 and 4).