

Product datasheet for **AP02640PU-N**

Rb (RB1) Rabbit Polyclonal Antibody

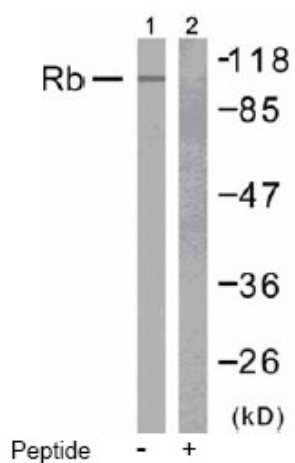
Product data:

Product Type:	Primary Antibodies
Applications:	IHC, WB
Recommended Dilution:	Western blot (1:500 - 1:1000). Immunohistochemistry (1:50 - 1:100).
Reactivity:	Human, Mouse, Rat
Host:	Rabbit
Clonality:	Polyclonal
Immunogen:	Synthesized non-phosphopeptide derived from human Rb around the phosphorylation site of serine 807.
Specificity:	This antibody detects endogenous levels of total Rb protein.
Formulation:	Phosphate buffered saline (without Mg ²⁺ and Ca ²⁺), pH 7.4, 150mM NaCl, 0.02% sodium azide and 50% glycerol. State: Aff - Purified State: Liquid Ig fraction
Concentration:	lot specific
Purification:	Affinity-chromatography using epitope-specific immunogen
Conjugation:	Unconjugated
Storage:	Store (in aliquots) at -20 °C. Avoid repeated freezing and thawing.
Stability:	Shelf life: one year from despatch.
Gene Name:	RB transcriptional corepressor 1
Database Link:	Entrez Gene 5925 Human P06400
Synonyms:	Retinoblastoma 1, Rb, p105-Rb, pRb, pp110, OSRC

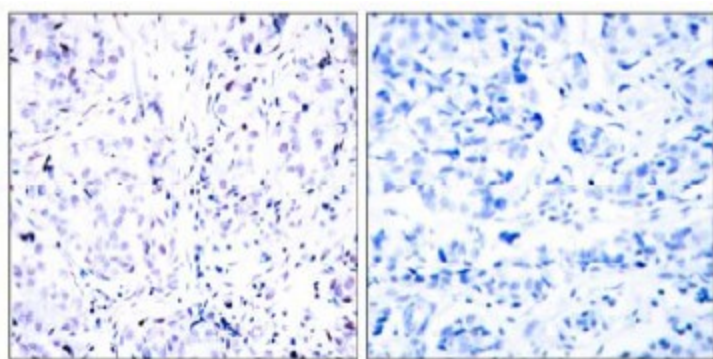


[View online »](#)

Product images:



Western blot analysis of extracts from MOLT cells using Rb antibody.



Immunohistochemical analysis of paraffin-embedded human breast carcinoma tissue using Rb antibody.