

## Product datasheet for **AP02636PU-S**

### beta Catenin (CTNNB1) Rabbit Polyclonal Antibody

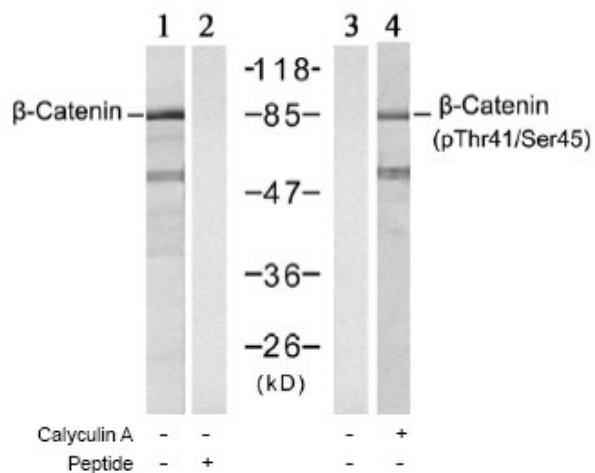
#### Product data:

Product Type:	Primary Antibodies
Applications:	WB
Recommended Dilution:	Western blot (1:500~1:1000).
Reactivity:	Human, Mouse, Rat
Host:	Rabbit
Clonality:	Polyclonal
Immunogen:	Synthesized non-phosphopeptide derived from human $\beta$ -Catenin around the phosphorylation site of threonine 41/serine 45 A-T-T(p)-T-A-P-S(p)-L-S
Specificity:	This antibody detects endogenous levels of total $\beta$ -Catenin protein.
Formulation:	PBS (without Mg <sup>2+</sup> and Ca <sup>2+</sup> ), pH 7.4, 150 mM NaCl, 0.02 % sodium azide and 50 % glycerol State: Aff - Purified State: Liquid purified Ig fraction
Concentration:	lot specific
Purification:	Affinity-chromatography using epitope-specific immunogen
Conjugation:	Unconjugated
Storage:	Store (in aliquots) at -20 °C. Avoid repeated freezing and thawing.
Stability:	Shelf life: one year from despatch.
Gene Name:	catenin beta 1
Database Link:	<a href="#">Entrez Gene 1499 Human P35222</a>
Synonyms:	CTNNB1, CTNNB, Beta-catenin



[View online »](#)

Product images:



Western blot analysis of extracts from SW626 cell using β-Catenin antibody (Lane 1 and 2) and β-Catenin (phospho-Thr41/Ser45) antibody (Lane 3 and 4).