

## Product datasheet for **AP02635PU-S**

### **G3BP (G3BP1) Rabbit Polyclonal Antibody**

#### **Product data:**

<b>Product Type:</b>	Primary Antibodies
<b>Applications:</b>	IHC, WB
<b>Recommended Dilution:</b>	Western Blot: 1:500~1000. Immunohistochemistry: 1:50~1:100.
<b>Reactivity:</b>	Human
<b>Host:</b>	Rabbit
<b>Clonality:</b>	Polyclonal
<b>Immunogen:</b>	The antiserum was produced against synthesized non-phosphopeptide derived from human G3BP-1 around the phosphorylation site of serine 232 (S-S-SP-P-A).
<b>Specificity:</b>	G3BP-1 antibody detects endogenous levels of total G3BP-1 protein.
<b>Formulation:</b>	PBS(without Mg <sup>2+</sup> and Ca <sup>2+</sup> ), pH 7.4 containing 150mM NaCl, 0.02% sodium azide and 50% glycerol State: Aff - Purified State: Liquid purified IgG
<b>Concentration:</b>	lot specific
<b>Purification:</b>	Affinity-chromatography using epitope-specific immunogen
<b>Conjugation:</b>	Unconjugated
<b>Storage:</b>	Store the antibody at -20°C. Avoid repeated freezing and thawing.
<b>Stability:</b>	Shelf life: one year from despatch.
<b>Gene Name:</b>	G3BP stress granule assembly factor 1
<b>Database Link:</b>	<a href="#">Entrez Gene 10146 Human Q13283</a>



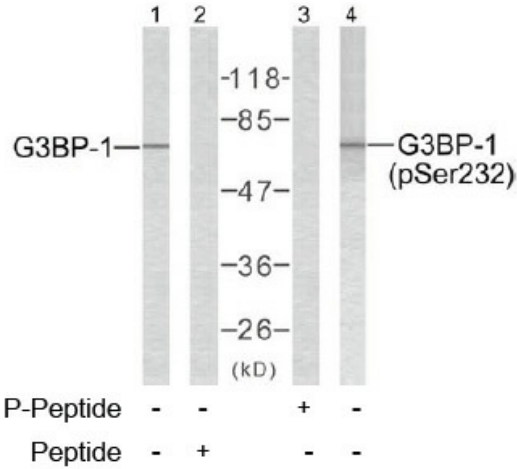
[View online »](#)

**Background:**

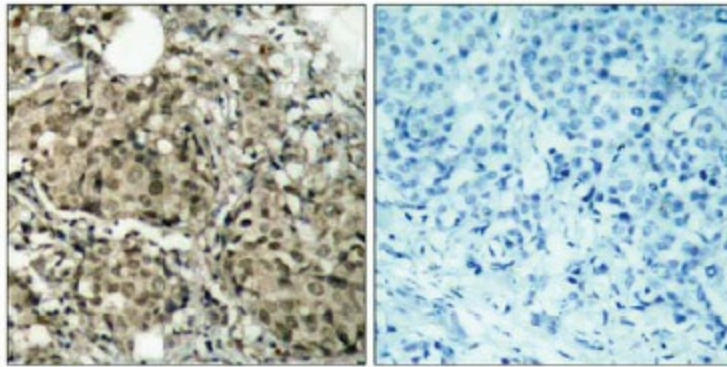
G3BP is one of the DNA-unwinding enzymes which prefers partially unwound 3'-tailed substrates and can also unwind partial RNA/DNA and RNA/RNA duplexes in an ATP-dependent fashion. This enzyme is a member of the heterogeneous nuclear RNA-binding proteins and is also an element of the Ras signal transduction pathway. It binds specifically to the Ras-GTPase-activating protein by associating with its SH3 domain. Several alternatively spliced transcript variants of this gene have been described, but the full-length nature of some of these variants has not been determined.

**Synonyms:**

G3BP-1, hDH VIII

**Product images:**


Western blot analysis of extracts from 293 cells using G3BP-1 antibody (Lane 1 and 2) and G3BP-1 (pSer232) antibody (Lane 3 and 4).



Immunohistochemical analysis of paraffin-embedded human breast carcinoma tissue using G3BP-1 antibody.