

Product datasheet for **AP02635PU-N**

G3BP (G3BP1) Rabbit Polyclonal Antibody

Product data:

Product Type:	Primary Antibodies
Applications:	IHC, WB
Recommended Dilution:	Western Blot: 1:500~1000. Immunohistochemistry: 1:50~1:100.
Reactivity:	Human
Host:	Rabbit
Clonality:	Polyclonal
Immunogen:	The antiserum was produced against synthesized non-phosphopeptide derived from human G3BP-1 around the phosphorylation site of serine 232 (S-S-SP-P-A).
Specificity:	G3BP-1 antibody detects endogenous levels of total G3BP-1 protein.
Formulation:	PBS(without Mg ²⁺ and Ca ²⁺), pH 7.4 containing 150mM NaCl, 0.02% sodium azide and 50% glycerol State: Aff - Purified State: Liquid purified IgG
Concentration:	lot specific
Purification:	Affinity-chromatography using epitope-specific immunogen
Conjugation:	Unconjugated
Storage:	Store the antibody at -20°C. Avoid repeated freezing and thawing.
Stability:	Shelf life: one year from despatch.
Gene Name:	G3BP stress granule assembly factor 1
Database Link:	Entrez Gene 10146 Human Q13283

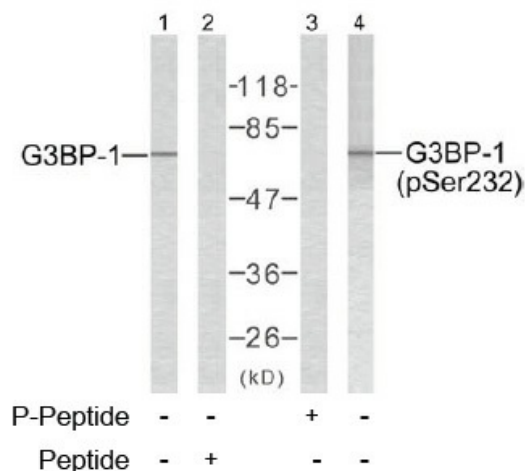
[View online »](#)

Background:

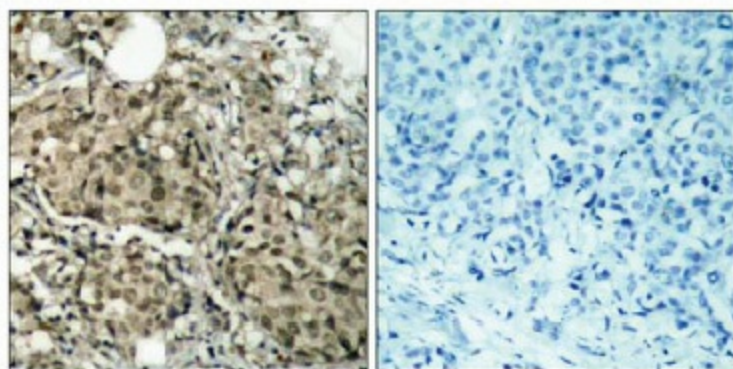
G3BP is one of the DNA-unwinding enzymes which prefers partially unwound 3'-tailed substrates and can also unwind partial RNA/DNA and RNA/RNA duplexes in an ATP-dependent fashion. This enzyme is a member of the heterogeneous nuclear RNA-binding proteins and is also an element of the Ras signal transduction pathway. It binds specifically to the Ras-GTPase-activating protein by associating with its SH3 domain. Several alternatively spliced transcript variants of this gene have been described, but the full-length nature of some of these variants has not been determined.

Synonyms:

G3BP-1, hDH VIII

Product images:


Western blot analysis of extracts from 293 cells using G3BP-1 antibody (Lane 1 and 2) and G3BP-1 (pSer232) antibody (Lane 3 and 4).



Immunohistochemical analysis of paraffin-embedded human breast carcinoma tissue using G3BP-1 antibody.

Peptide - +