

Product datasheet for **AP02620PU-N**

IGF1 Receptor (IGF1R) Rabbit Polyclonal Antibody

Product data:

Product Type:	Primary Antibodies
Applications:	IF, IHC, WB
Recommended Dilution:	Western Blot: 1/500 - 1/1000; Incubate membrane with diluted antibody in 5% nonfat milk, 1X TBS, 0,1% Tween-20 at 4°C with gentle shaking, overnight. Immunohistochemistry on Paraffin Embedded Tissue: 1/50 - 1/100. Immunofluorescence: 1/100 - 1/200.
Reactivity:	Human, Mouse, Rat
Host:	Rabbit
Clonality:	Polyclonal
Immunogen:	Peptide sequence aa. 1159-1163 (D-I-Y-E-T) derived from human IGF-1R.
Specificity:	The antibody detects endogenous levels of total IGF-1R protein.
Formulation:	PBS (without Mg ²⁺ and Ca ²⁺), pH 7.4 containing 150 mM NaCl, 0.02% Sodium Azide and 50% Glycerol. State: Aff - Purified State: Liquid purified IgG fraction
Concentration:	lot specific
Purification:	Affinity chromatography
Conjugation:	Unconjugated
Storage:	Store undiluted at 2-8°C for one month or (in aliquots) at -20°C for longer. Avoid repeated freezing and thawing.
Stability:	Shelf life: one year from despatch.
Predicted Protein Size:	Predicted MW: 200 95 kd
Gene Name:	insulin like growth factor 1 receptor
Database Link:	Entrez Gene 3480 Human P08069



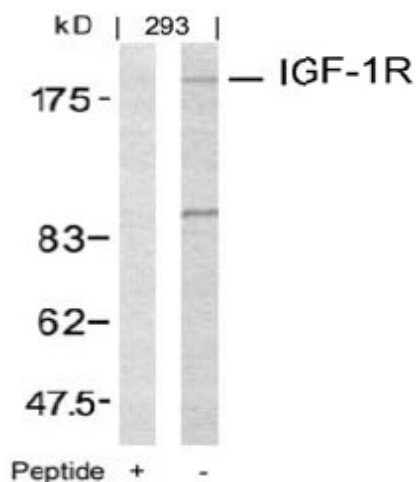
[View online »](#)

Background:

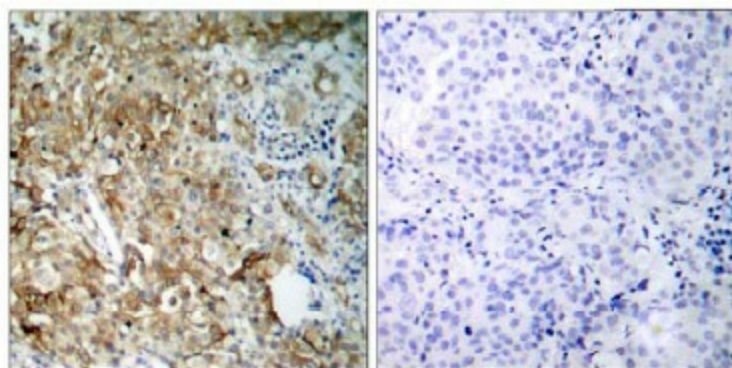
There are two kinds of IGF receptors based on their relative affinities for IGF1 versus IGF2. The IGF1 receptor prefers IGF1 over IGF2 and weakly binds insulin. IGF1 receptor is a disulfide-linked heterotetrameric transmembrane protein consisting of two alpha (130 kD) and two beta (95 kD) subunits. Both the alpha and beta subunits are encoded within a single receptor precursor cDNA. The IGF1 receptor is therefore similar in structure to the insulin receptor. The proreceptor polypeptide is proteolytically cleaved and disulfide-linked to yield the mature heterotetrameric receptor. The IGF1 receptor is highly expressed in all cell types and tissues and is highly overexpressed in most malignant tissues where it functions as an anti-apoptotic agent by enhancing cell survival.

Synonyms:

IGF-I receptor, IGF1 Receptor

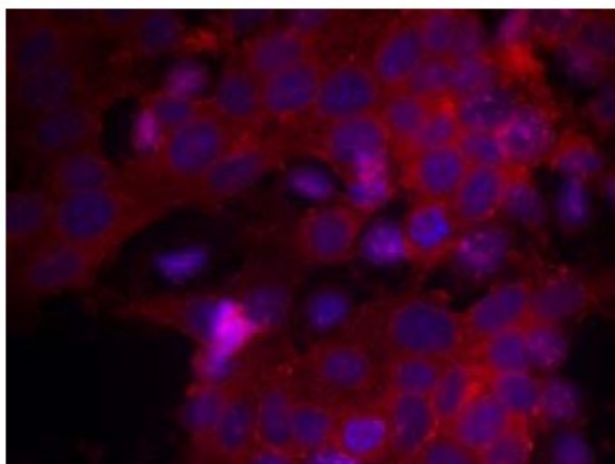
Product images:


Western Blot analysis of extracts from 293 cells using IGF-1R antibody and the same antibody preincubated with blocking peptide



Peptide - +

Figure 1. Immunohistochemical analysis of paraffin-embedded human breast carcinoma tissue using IGF-1R antibody.



Immunofluorescence staining of methanol-fixed MCF cells using IGF-1R antibody