

Product datasheet for **AP02612PU-N**

Her2 (ERBB2) Rabbit Polyclonal Antibody

Product data:

Product Type:	Primary Antibodies
Applications:	IF, IHC, WB
Recommended Dilution:	Western Blot: 1/500-1/1000. Incubate membrane with diluted antibody in 5% nonfat milk, 1xTBS, 0.1% Tween-20 at 4°C with gentle shaking, overnight. Immunofluorescence: 1/100-1/200. Immunohistochemistry on Paraffin Sections: 1/50-1/100.
Reactivity:	Human, Mouse, Rat
Host:	Rabbit
Clonality:	Polyclonal
Immunogen:	Peptide sequence around amino acids 1246~1250 (P-E-Y-L-G) derived from Human HER2.
Specificity:	This antibody detects endogenous levels of total HER2 protein.
Formulation:	PBS (without Mg ²⁺ and Ca ²⁺), pH 7.4 containing 150 mM NaCl, 0.02% Sodium Azide and 50% Glycerol. State: Aff - Purified State: Liquid purified Ig fraction.
Concentration:	lot specific
Purification:	Affinity Chromatography using epitope-specific immunogen.
Conjugation:	Unconjugated
Storage:	Store the antibody (in aliquots) at -20°C. Avoid repeated freezing and thawing.
Stability:	Shelf life: One year from despatch.
Gene Name:	erb-b2 receptor tyrosine kinase 2
Database Link:	Entrez Gene 2064 Human P04626



[View online »](#)

Background:

ErbB 2 is a receptor tyrosine kinase of the ErbB 2 family. It is closely related in structure to the epidermal growth factor receptor. ErbB 2 oncoprotein is detectable in a proportion of breast and other adenocarcinomas, as well as transitional cell carcinomas. In the case of breast cancer, expression determined by immunohistochemistry has been shown to be associated with poor prognosis.

Synonyms:

HER-2, NEU, p185erbB2, NGL, c-erbB-2, MNL19

Note:

Molecular Weight: 185 kDa

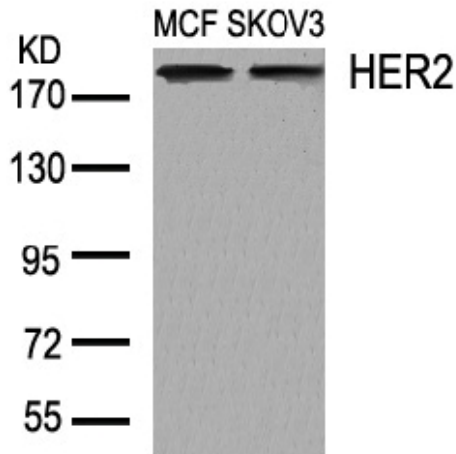
Product images:


Figure 3. Western blot analysis of extracts from MCF and SKOV3 cells using HER2 antibody.

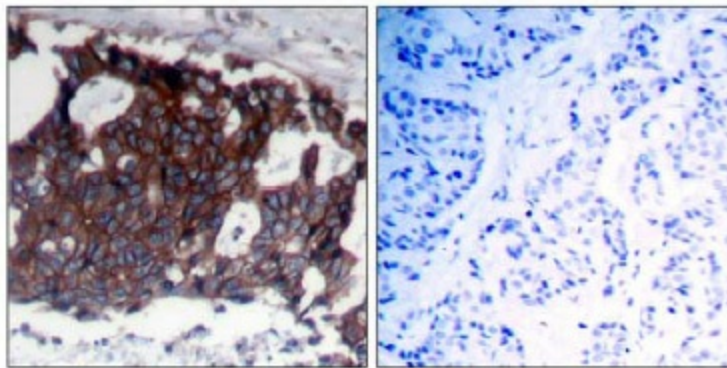


Figure 1. Immunohistochemical analysis of paraffin-embedded human breast carcinoma tissue using HER2 antibody (Left) and the same antibody preincubated with blocking peptide (Right).

Peptide

-

+

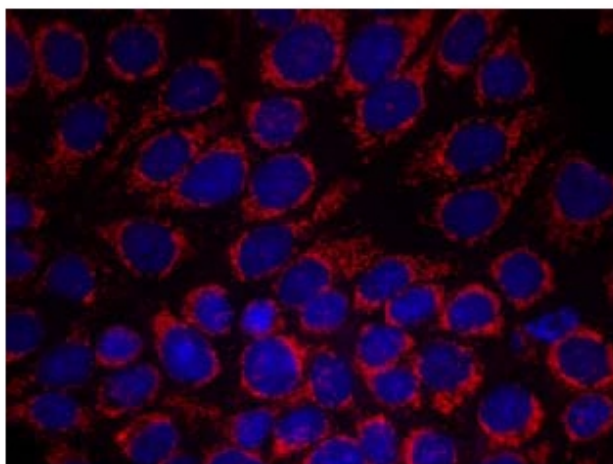


Figure 3. Immunofluorescence staining of methanol-fixed MCF7 cells using HER2 antibody.