

## Product datasheet for **AP02610PU-N**

### Her2 (ERBB2) Rabbit Polyclonal Antibody

#### Product data:

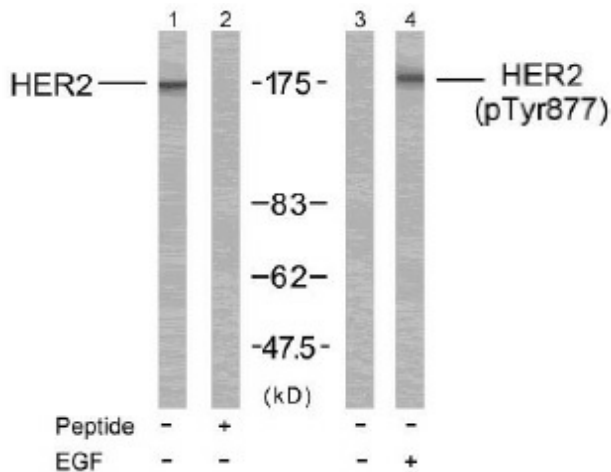
Product Type:	Primary Antibodies
Applications:	IHC, WB
Recommended Dilution:	Western Blot: 1:500~1:1000. Immunohistochemistry: 1:50~1:100.
Reactivity:	Human, Mouse, Rat
Host:	Rabbit
Clonality:	Polyclonal
Immunogen:	The antiserum was produced against synthesized non-phosphopeptide derived from human HER2 around the phosphorylation site of tyrosine 877 (T-E-YP-H-A).
Specificity:	HER2 antibody detects endogenous levels of total HER2 protein.
Formulation:	PBS(without Mg <sup>2+</sup> and Ca <sup>2+</sup> ), pH 7.4 containing 150mM NaCl, 0.02% sodium azide and 50% glycerol State: Aff - Purified State: Liquid purified IgG
Concentration:	lot specific
Purification:	Affinity-chromatography using epitope-specific immunogen
Conjugation:	Unconjugated
Storage:	Store the antibody at -20°C. Avoid repeated freezing and thawing.
Stability:	Shelf life: one year from despatch.
Gene Name:	erb-b2 receptor tyrosine kinase 2
Database Link:	<a href="#">Entrez Gene 2064 Human P04626</a>
Background:	ErbB 2 is a receptor tyrosine kinase of the ErbB 2 family. It is closely related in structure to the epidermal growth factor receptor. ErbB 2 oncoprotein is detectable in a proportion of breast and other adenocarcinomas, as well as transitional cell carcinomas. In the case of breast cancer, expression determined by immunohistochemistry has been shown to be associated with poor prognosis.



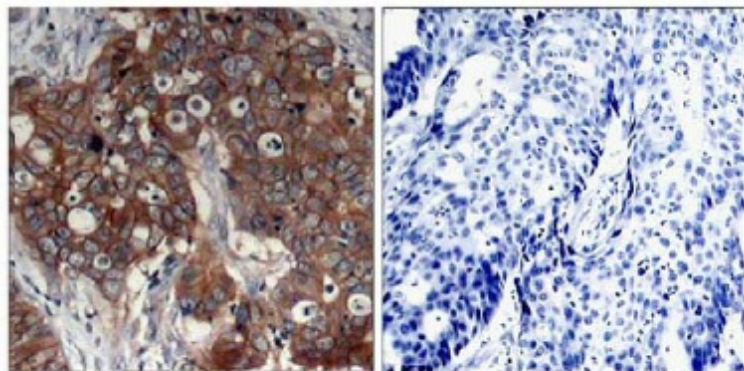
[View online »](#)

Synonyms: HER-2, NEU, p185erbB2, NGL, c-erbB-2, MNL19

**Product images:**



Western blot analysis of extracts from MDA-MB-231 cells using HER2 antibody (Line 1 and 2) and HER2 (pTyr877) antibody (Line 2 and 4)



Peptide - | +

Immunohistochemical analysis of paraffin-embedded human breast carcinoma tissue using HER2 antibody.