

Product datasheet for **AP02608PU-S**

Estrogen Receptor 1 (ESR1) Rabbit Polyclonal Antibody

Product data:

| | |
|-----------------------|--|
| Product Type: | Primary Antibodies |
| Applications: | IF, IHC, WB |
| Recommended Dilution: | Western Blot: 1/500 - 1/1000. Immunohistochemistry on paraffin sections: 1/50 - 1/100. Immunofluorescence: 1/100 - 1/200. |
| Reactivity: | Human, Mouse |
| Host: | Rabbit |
| Clonality: | Polyclonal |
| Immunogen: | Synthetic non-phosphopeptide derived from human Estrogen Receptor-alpha around the phosphorylation site of serine118 (Q-L-SP-P-F). |
| Specificity: | Estrogen Receptor-alpha antibody detects endogenous levels of total Estrogen Receptor-alpha protein. |
| Formulation: | PBS(without Mg ²⁺ and Ca ²⁺), pH 7.4 containing 150mM NaCl, 0.02% sodium azide and 50% glycerol State: Aff - Purified State: Liquid purified IgG fraction |
| Concentration: | lot specific |
| Purification: | Affinity chromatography |
| Conjugation: | Unconjugated |
| Storage: | Store the antibody at -20°C. Avoid repeated freezing and thawing. |
| Stability: | Shelf life: one year from despatch. |
| Gene Name: | estrogen receptor 1 |
| Database Link: | Entrez Gene 2099 Human P03372 |



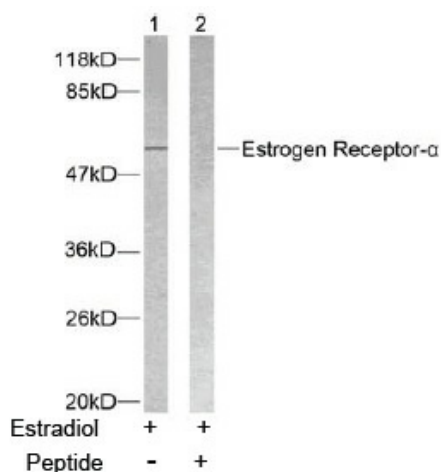
[View online »](#)

Background:

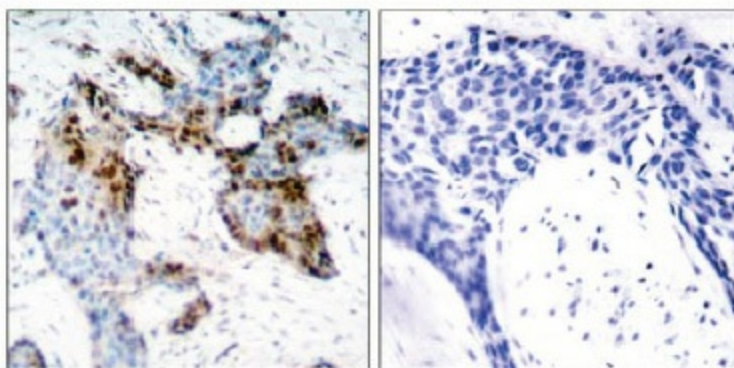
Estrogen Receptor alpha is a 65 kDa protein and a member of the steroid family of nuclear receptors. Estrogen Receptor alpha is a ligand-activated transcription factor that, when bound to estrogen, induces a conformational change that allows dimerization and binding to estrogen response element sequences. When bound to DNA, Estrogen Receptor alpha can positively or negatively regulate gene transcription. Like other steroid hormone receptors, Estrogen Receptors are intracellular proteins. Estrogen Receptors play an important role in regulating mammary gland growth and differentiation. Breast tumors that are ER positive may also show a more favorable response to anti-estrogen therapies.

Synonyms:

ER alpha, Estradiol receptor, ESR1, ESR, NR3A1

Product images:

Western blot analysis of extracts from MCF7 cells using Estrogen Receptor- α antibody.

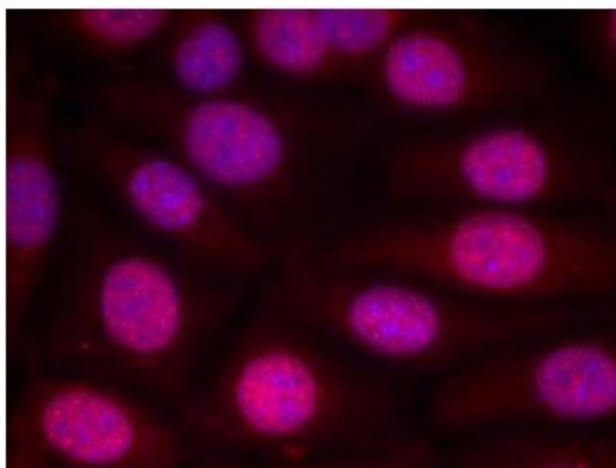


Peptide

-

+

Immunohistochemical analysis of paraffin-embedded human breast carcinoma tissue using Estrogen Receptor- α antibody.



Immunofluorescence staining of methanol-fixed MCF cells using Estrogen Receptor-alpha antibody