

## Product datasheet for **AP02605PU-N**

### **BAD Rabbit Polyclonal Antibody**

#### **Product data:**

<b>Product Type:</b>	Primary Antibodies
<b>Applications:</b>	IHC, WB
<b>Recommended Dilution:</b>	Western Blot: 1:500~1:1000. Immunohistochemistry: 1:50~1:100.
<b>Reactivity:</b>	Human, Mouse, Rat
<b>Host:</b>	Rabbit
<b>Clonality:</b>	Polyclonal
<b>Immunogen:</b>	The antiserum was produced against synthesized non-phosphopeptide derived from human BAD around the phosphorylation site of serine 155 (R-M-SP-D-E).
<b>Specificity:</b>	BAD antibody detects endogenous levels of total BAD protein.
<b>Formulation:</b>	PBS(without Mg <sup>2+</sup> and Ca <sup>2+</sup> ), pH 7.4 containing 150mM NaCl, 0.02% sodium azide and 50% glycerol State: Aff - Purified State: Liquid purified IgG
<b>Concentration:</b>	lot specific
<b>Purification:</b>	Affinity-chromatography using epitope-specific immunogen
<b>Conjugation:</b>	Unconjugated
<b>Storage:</b>	Store the antibody at -20°C. Avoid repeated freezing and thawing.
<b>Stability:</b>	Shelf life: one year from despatch.
<b>Gene Name:</b>	BCL2 associated agonist of cell death
<b>Database Link:</b>	<a href="#">Entrez Gene 572 Human Q92934</a>



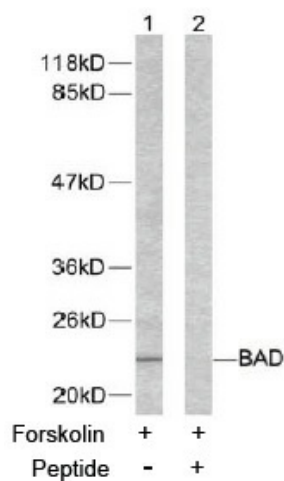
[View online »](#)

**Background:**

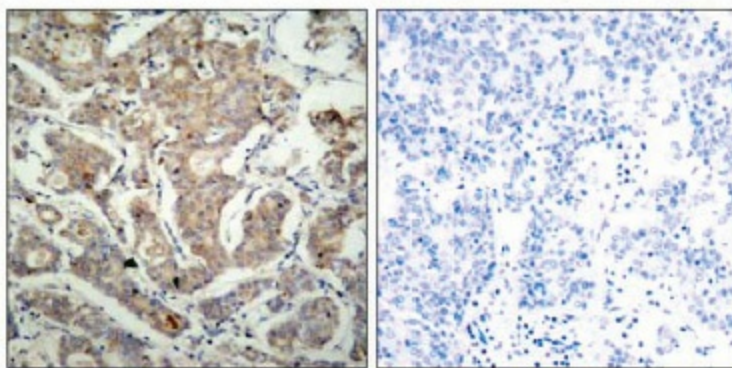
Bad is a member of the Bcl2 family and acts to promote apoptosis by forming heterodimers with the survival proteins Bcl2 and BclxL, thus preventing them from binding with BAX. Bad is found on the outer mitochondrial membrane and, once phosphorylated in response to growth stimuli, translocates to the cytoplasm. The phosphorylation status of Bad represents a key checkpoint for death or cell survival. JNK-induced phosphorylation of BAD serine 128 promotes the apoptotic role of Bad by opposing the inhibitory effect of growth factor on Bad-mediated apoptosis. Cdc2-induced phosphorylation of Bad serine 128 has an inhibitory effect on its interaction with 14-3-3 proteins. The latter interaction is critical for Bad phosphorylation at serine 155, a site within the BH3 domain that leads to the release of BclxL and the promotion of cell survival. Alternative splicing of this gene results in two transcript variants which encode the same isoform.

**Synonyms:**

BAD, BBC6, BCL2L8, Bcl-2-like protein 8, Bcl2-L-8

**Product images:**


Western blot analysis of extracts from 293 cells using BAD antibody.



Peptide - +

Immunohistochemical analysis of paraffin-embedded human breast carcinoma tissue using BAD antibody.