

## Product datasheet for **AP02598PU-S**

### PTEN Rabbit Polyclonal Antibody

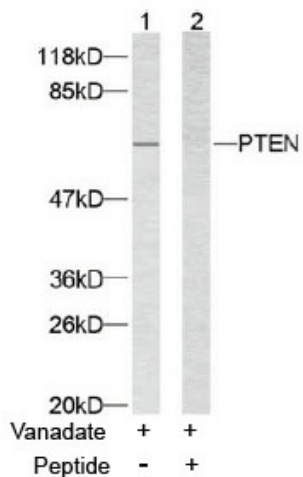
#### Product data:

Product Type:	Primary Antibodies
Applications:	IHC, WB
Recommended Dilution:	Western Blot: 1:100~1:500. Immunohistochemistry: 1:50~1:100.
Reactivity:	Human, Mouse, Rat
Host:	Rabbit
Clonality:	Polyclonal
Immunogen:	This antiserum was produced against synthesized non-phosphopeptide derived from human PTEN around the phosphorylation site of serine 370 (D-V-SP-D-N).
Specificity:	PTEN antibody detects endogenous levels of total PTEN protein.
Formulation:	PBS(without Mg <sup>2+</sup> and Ca <sup>2+</sup> ), pH 7.4 containing 150mM NaCl, 0.02% sodium azide and 50% glycerol State: Aff - Purified State: Liquid purified IgG
Concentration:	lot specific
Purification:	Affinity-chromatography using epitope-specific immunogen
Conjugation:	Unconjugated
Storage:	Store the antibody at -20°C. Avoid repeated freezing and thawing.
Stability:	Shelf life: one year from despatch.
Gene Name:	phosphatase and tensin homolog
Database Link:	<a href="#">Entrez Gene 5728 Human P60484</a>
Synonyms:	MMAC1, TEP1

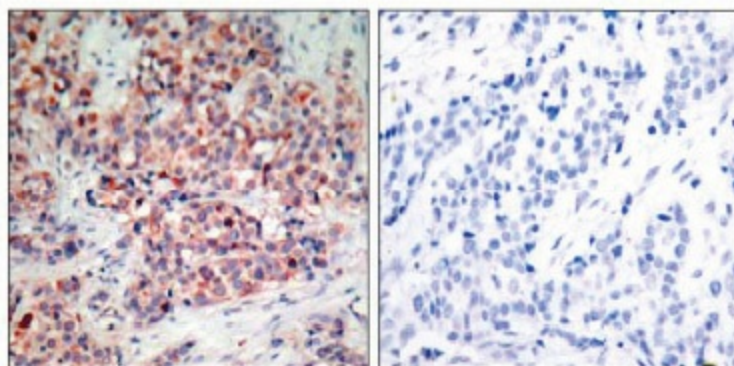


[View online »](#)

Product images:



Western blot analysis of extracts from HeLa cells using PTEN antibody.



Peptide

-

+

Immunohistochemical analysis of paraffin-embedded human breast carcinoma tissue using PTEN antibody.