

Product datasheet for **AP02597PU-S**

PTEN Rabbit Polyclonal Antibody

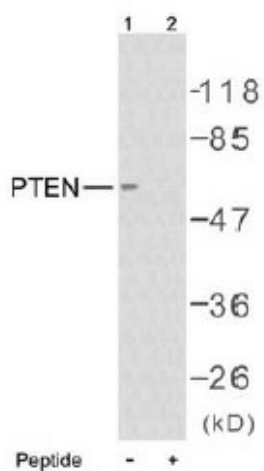
Product data:

Product Type:	Primary Antibodies
Applications:	IHC, WB
Recommended Dilution:	Western Blot: 1:100~1:500. Immunohistochemistry: 1:50~1:100.
Reactivity:	Human, Mouse, Rat
Host:	Rabbit
Clonality:	Polyclonal
Immunogen:	The antiserum was produced against synthesized non-phosphopeptide derived from human PTEN around the phosphorylation site of serine 380 and threonine 382/383 (R-Y-SP-D-TP-TP-D-S).
Specificity:	PTEN antibody detects endogenous levels of total PTEN protein.
Formulation:	PBS(without Mg ²⁺ and Ca ²⁺), pH 7.4 containing 150mM NaCl, 0.02% sodium azide and 50% glycerol State: Aff - Purified State: Liquid purified IgG
Concentration:	lot specific
Purification:	Affinity-chromatography using epitope-specific immunogen
Conjugation:	Unconjugated
Storage:	Store the antibody at -20°C. Avoid repeated freezing and thawing.
Stability:	Shelf life: one year from despatch.
Gene Name:	phosphatase and tensin homolog
Database Link:	Entrez Gene 5728 Human P60484
Synonyms:	MMAC1, TEP1

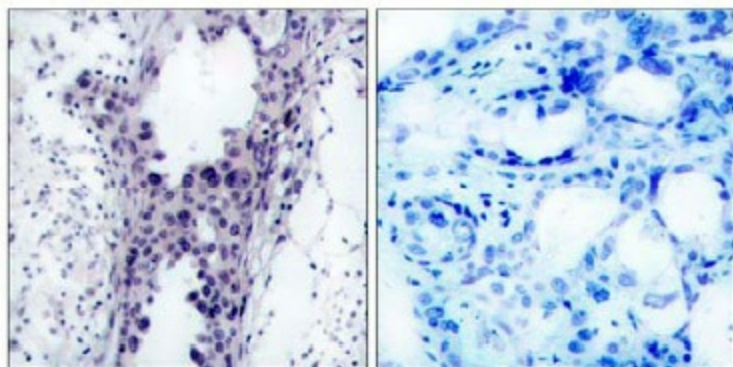


[View online »](#)

Product images:



Western blot analysis of extracts from HT29 cells using PTEN antibody.



Immunohistochemical analysis of paraffin-embedded human breast carcinoma tissue using PTEN antibody.

Peptide - +