

Product datasheet for **AP02596PU-S**

AKT1 Rabbit Polyclonal Antibody

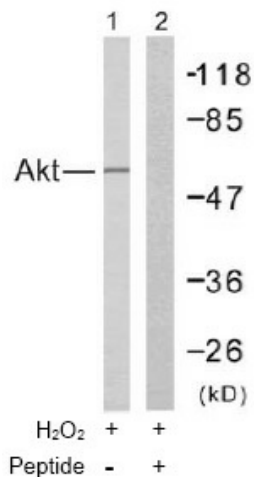
Product data:

Product Type:	Primary Antibodies
Applications:	IHC, WB
Recommended Dilution:	Western Blot: 1/100~1/500. Immunohistochemistry: 1/50~1/100.
Reactivity:	Human, Mouse, Rat
Host:	Rabbit
Clonality:	Polyclonal
Immunogen:	The antiserum was produced against synthesized non-phosphopeptide derived from human Akt around the phosphorylation site of threonine 308 (M-K-TP-F-C).
Specificity:	This antibody detects endogenous levels of total Akt protein.
Formulation:	PBS (without Mg ²⁺ and Ca ²⁺), pH 7.4 containing 150mM NaCl, 0.02% Sodium Azide and 50% Glycerol. State: Aff - Purified State: Liquid purified IgG fraction.
Concentration:	lot specific
Purification:	Affinity Chromatography using epitope-specific immunogen
Conjugation:	Unconjugated
Storage:	Store the antibody (in aliquots) at -20°C. Avoid repeated freezing and thawing.
Stability:	Shelf life: one year from despatch.
Gene Name:	AKT serine/threonine kinase 1
Database Link:	Entrez Gene 207 Human P31749
Synonyms:	Akt-1, RAC-PK-alpha, Protein kinase B, C-AKT

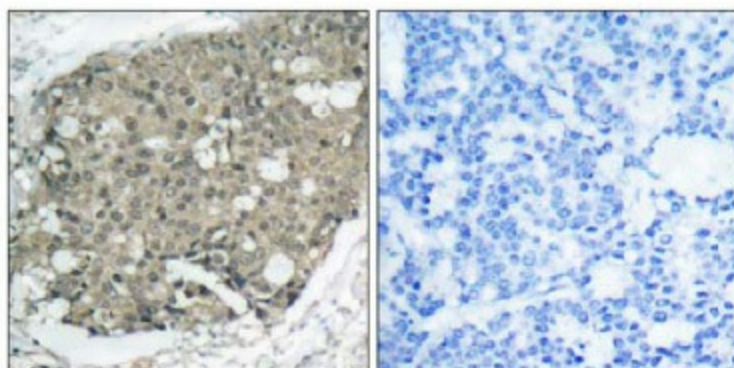


[View online »](#)

Product images:



Western blot analysis of the extracts from Jurkat cells using Akt antibody.



Peptide - +

Immunohistochemical analysis of paraffin-embedded human breast carcinoma tissue using Akt antibody.