

Product datasheet for **AP02595PU-N**

AKT1 Rabbit Polyclonal Antibody

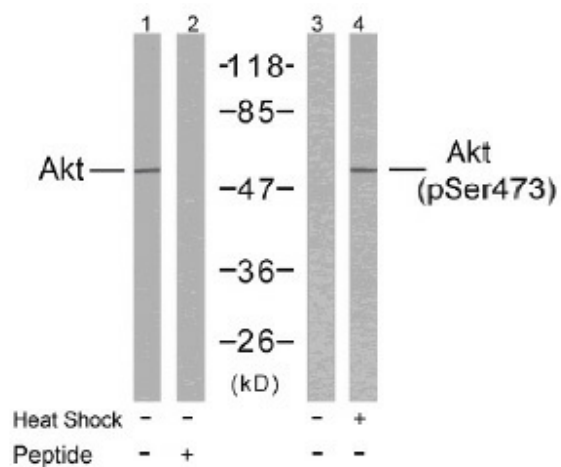
Product data:

Product Type:	Primary Antibodies
Applications:	IHC, WB
Recommended Dilution:	Western Blot: 1:100~1:500. Immunohistochemistry: 1:50~1:100.
Reactivity:	Human, Mouse
Host:	Rabbit
Clonality:	Polyclonal
Immunogen:	The antiserum was produced against synthesized non-phosphopeptide derived from human Akt around the phosphorylation site of serine 473 (Q-F-SP-Y-S).
Specificity:	Akt antibody detects endogenous levels of total Akt protein.
Formulation:	PBS(without Mg ²⁺ and Ca ²⁺), pH 7.4 containing 150mM NaCl, 0.02% sodium azide and 50% glycerol State: Aff - Purified State: Liquid purified IgG
Concentration:	lot specific
Purification:	Affinity-chromatography using epitope-specific immunogen
Conjugation:	Unconjugated
Storage:	Store the antibody at -20°C. Avoid repeated freezing and thawing.
Stability:	Shelf life: one year from despatch.
Gene Name:	AKT serine/threonine kinase 1
Database Link:	Entrez Gene 207 Human P31749
Synonyms:	Akt-1, RAC-PK-alpha, Protein kinase B, C-AKT

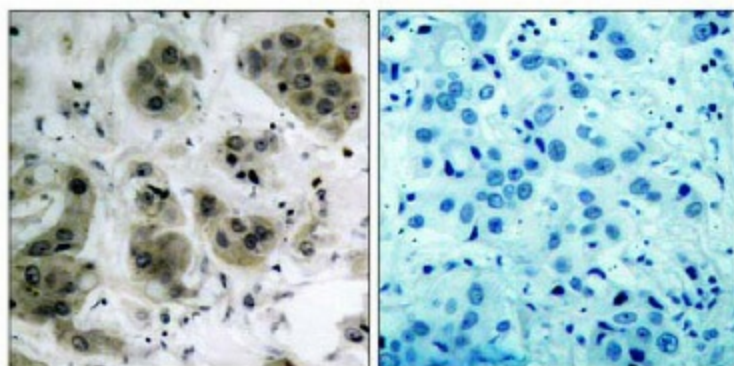


[View online »](#)

Product images:



Western blot analysis of extracts from HeLa cells using Akt antibody (Lane 1 and 2) and Akt (pSer473) antibody (Lane 3 and 4).



Immunohistochemical analysis of paraffin-embedded human breast carcinoma tissue using Akt antibody.

Peptide - +