

Product datasheet for **AP02591PU-N**

STAT6 Rabbit Polyclonal Antibody

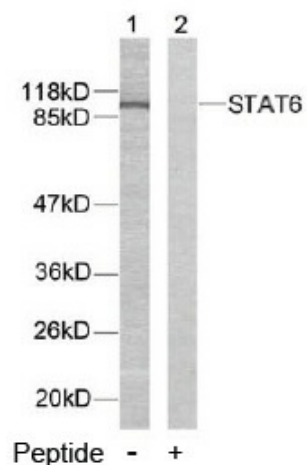
Product data:

Product Type:	Primary Antibodies
Applications:	IHC, WB
Recommended Dilution:	Western Blot: 1/500~1/1000. Immunohistochemistry: 1/50~1/100.
Reactivity:	Human
Host:	Rabbit
Clonality:	Polyclonal
Immunogen:	Peptide sequence around amino acids 639~643 (R-G-Y-V-P) derived from Human STAT6.
Specificity:	This antibody detects endogenous levels of total STAT6 protein.
Formulation:	PBS(without Mg ²⁺ and Ca ²⁺), pH 7.4 containing 150mM NaCl, 0.02% Sodium Azide and 50% glycerol State: Aff - Purified State: Liquid purified IgG fraction
Concentration:	lot specific
Purification:	Affinity-chromatography using epitope-specific immunogen
Conjugation:	Unconjugated
Storage:	Store undiluted at 2-8°C for one month or (in aliquots) at -20°C for longer. Avoid repeated freezing and thawing.
Stability:	Shelf life: one year from despatch.
Gene Name:	signal transducer and activator of transcription 6
Database Link:	Entrez Gene 6778 Human P42226
Synonyms:	IL-4 Stat

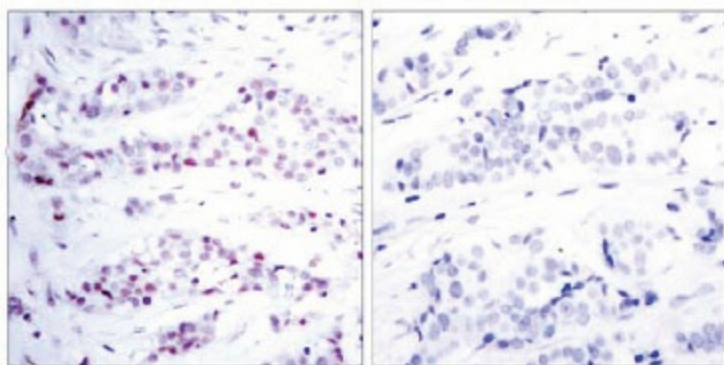


[View online »](#)

Product images:



Western blot analysis of extracts from HeLa cells using STAT6 antibody.



Peptide - +

Immunohistochemical analysis of paraffin-embedded human breast carcinoma tissue using STAT6 antibody.