

## Product datasheet for **AP02590PU-N**

### STAT5A Rabbit Polyclonal Antibody

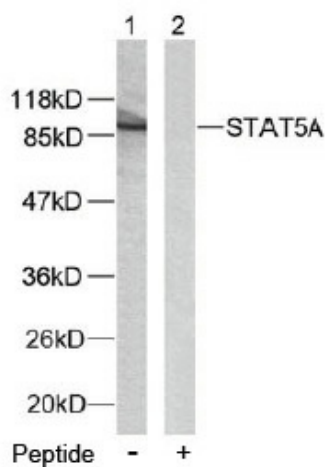
#### Product data:

Product Type:	Primary Antibodies
Applications:	IHC, WB
Recommended Dilution:	Western Blot: 1:500~1:1000. Immunohistochemistry: 1:50~1:100.
Reactivity:	Human, Mouse, Rat
Host:	Rabbit
Clonality:	Polyclonal
Immunogen:	The antiserum was produced against synthesized non-phosphopeptide derived from human STAT5A around the phosphorylation site of serine 780 (R-L-SP-P-P).
Specificity:	STAT5A antibody detects endogenous levels of total STAT5A protein.
Formulation:	PBS(without Mg <sup>2+</sup> and Ca <sup>2+</sup> ), pH 7.4 containing 150mM NaCl, 0.02% sodium azide and 50% glycerol State: Aff - Purified State: Liquid purified IgG
Concentration:	lot specific
Purification:	Affinity-chromatography using epitope-specific immunogen
Conjugation:	Unconjugated
Storage:	Store the antibody at -20°C. Avoid repeated freezing and thawing.
Stability:	Shelf life: one year from despatch.
Gene Name:	signal transducer and activator of transcription 5A
Database Link:	<a href="#">Entrez Gene 6776 Human P42229</a>
Synonyms:	STAT-5, STAT-5A, Mammary gland factor, MGF

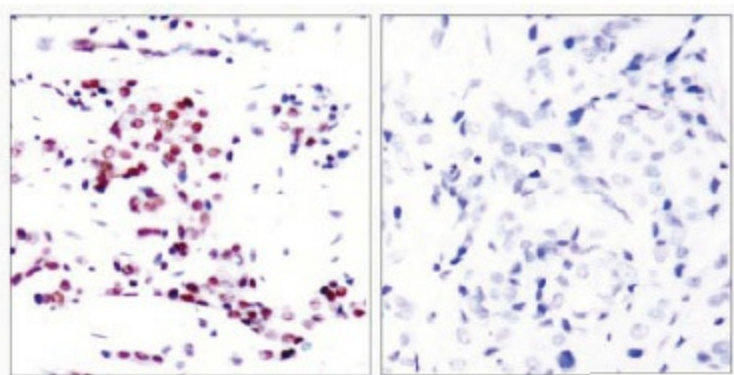


[View online »](#)

## Product images:



Western blot analysis of extracts from HeLa cells using STAT5A antibody.



Immunohistochemical analysis of paraffin-embedded human breast carcinoma tissue using STAT5A antibody.

Peptide - +