

Product datasheet for **AP02589PU-S**

STAT5A Rabbit Polyclonal Antibody

Product data:

| | |
|-----------------------|---|
| Product Type: | Primary Antibodies |
| Applications: | IHC, WB |
| Recommended Dilution: | Western Blot: 1/500~1/1000. Immunohistochemistry: 1/50~1/100. |
| Reactivity: | Human, Mouse |
| Host: | Rabbit |
| Clonality: | Polyclonal |
| Immunogen: | The antiserum was produced against synthesized non-phosphopeptide derived from human STAT5A around the phosphorylation site of Tyrosine 694 (D-G-YP-V-K). |
| Specificity: | This antibody detects endogenous levels of total STAT5A around Tyrosine 694. |
| Formulation: | PBS (without Mg ²⁺ and Ca ²⁺), pH 7.4 containing 150mM NaCl, 0.02% Sodium Azide and 50% Glycerol. State: Aff - Purified State: Liquid purified IgG fraction. |
| Concentration: | lot specific |
| Purification: | Affinity Chromatography using epitope-specific immunogen |
| Conjugation: | Unconjugated |
| Storage: | Store the antibody (in aliquots) at -20°C. Avoid repeated freezing and thawing. |
| Stability: | Shelf life: one year from despatch. |
| Gene Name: | signal transducer and activator of transcription 5A |
| Database Link: | Entrez Gene 6776 Human P42229 |



[View online »](#)

Background:

STAT5a protein is a transcription factor activated by hormone and cytokines. Two highly related, but distinct Stat 5 genes (Stat 5a and Stat 5b) were identified in mouse. The amino acid sequences of Stat 5a and Stat 5b show 96% sequence similarity, and both proteins are co expressed in most tissues of both virgin and lactating mice. However, differential accumulation of Stat 5a and Stat 5b mRNA has been reported for both muscle and mammary tissue. Stat 5a is critically involved in a variety of physiological functions, including reproduction, lactation, immune function and somatic growth.

Synonyms:

STAT-5, STAT-5A, Mammary gland factor, MGF

Note:

Predicted Molecular Weight: 91 kDa.

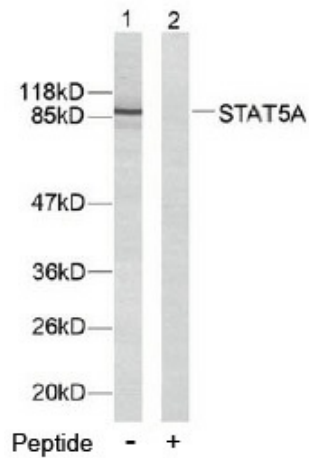
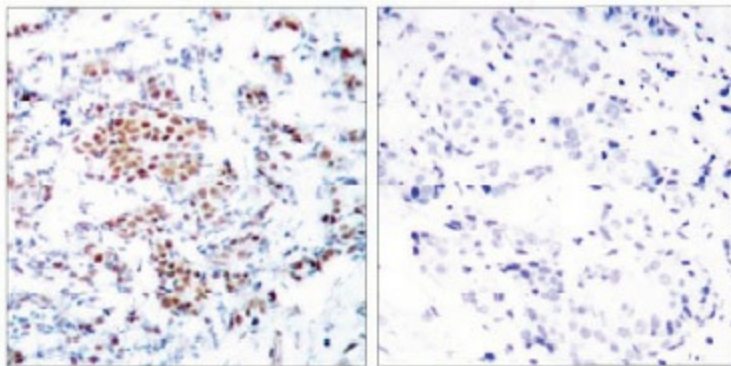
Product images:


Figure 2. Western blot analysis of extracts from HeLa cells using STAT5A antibody.



Peptide - +

Figure 1. Immunohistochemical analysis of paraffin-embedded human breast carcinoma tissue using STAT5A antibody.