

Product datasheet for **AP02588PU-S**

STAT4 Rabbit Polyclonal Antibody

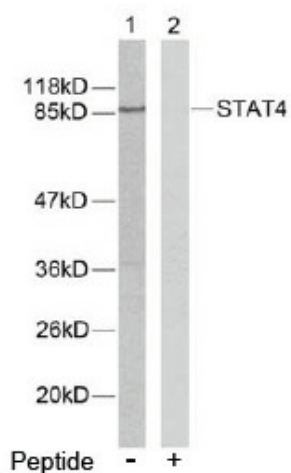
Product data:

Product Type:	Primary Antibodies
Applications:	IHC, WB
Recommended Dilution:	Western Blot: 1:500-1:1000. Immunohistochemistry on paraffin embedded tissue: 1:50-1:100.
Reactivity:	Human, Mouse, Rat
Host:	Rabbit
Clonality:	Polyclonal
Immunogen:	The antiserum was produced against synthesized non-phosphopeptide derived from human STAT4 around the phosphorylation site of tyrosine 693 (K-G-Y _p -V-P).
Specificity:	STAT4 antibody detects endogenous levels of total STAT4 protein.
Formulation:	PBS(without Mg ²⁺ and Ca ²⁺), pH 7.4 containing 150mM NaCl, 0.02% sodium azide and 50% glycerol State: Aff - Purified State: Liquid purified IgG
Concentration:	lot specific
Purification:	Affinity-chromatography using epitope-specific immunogen
Conjugation:	Unconjugated
Storage:	Store the antibody at -20°C. Avoid repeated freezing and thawing.
Stability:	Shelf life: one year from despatch.
Gene Name:	signal transducer and activator of transcription 4
Database Link:	Entrez Gene 6775 Human Q14765
Synonyms:	OTTHUMP00000163553; SLEB11

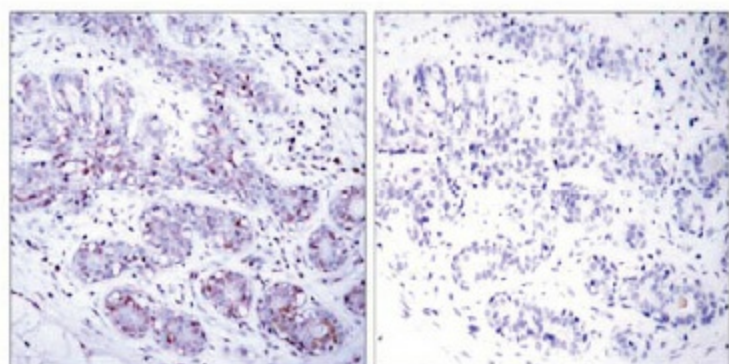


[View online »](#)

Product images:



Western blot analysis of extracts from HeLa cells using STAT4 antibody.



Immunohistochemical analysis of paraffin-embedded human breast carcinoma tissue using STAT4 antibody.

Peptide - +