

Product datasheet for **AP02587PU-N**

STAT3 Rabbit Polyclonal Antibody

Product data:

Product Type:	Primary Antibodies
Applications:	IHC, WB
Recommended Dilution:	Western Blot: 1/500-1/1000. Incubate membrane with diluent antibody in 5% nonfat milk, 1xTBS, 0.1% tween-20 at 4°C with gentle shaking, overnight. Immunohistochemistry on Paraffin Sections: 1/50-1/100.
Reactivity:	Human, Mouse, Rat
Host:	Rabbit
Clonality:	Polyclonal
Immunogen:	Synthetic peptide KLH conjugated corresponding to sequence around amino acids 725~729 (P-M-SP-P-R) derived from Human STAT3 protein.
Specificity:	This antibody detects endogenous levels of total STAT3 protein.
Formulation:	PBS (without Mg ²⁺ and Ca ²⁺), pH 7.4 containing 150mM NaCl, 0.02% Sodium Azide and 50% Glycerol State: Aff - Purified State: Liquid purified IgG fraction
Concentration:	lot specific
Purification:	Affinity-Chromatography using epitope-specific peptide
Conjugation:	Unconjugated
Storage:	Store the antibody (in aliquots) at -20°C. Avoid repeated freezing and thawing.
Stability:	Shelf life: one year from despatch.
Gene Name:	signal transducer and activator of transcription 3
Database Link:	Entrez Gene 6774 Human P40763



[View online »](#)

Background:

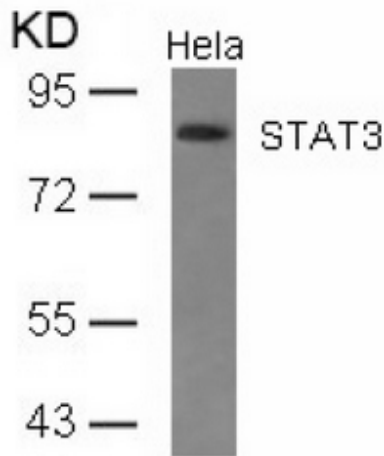
STAT3 is a key signaling molecule for many cytokines and growth-factor receptors and is required for murine fetal development. STAT3 is also constitutively activated in a number of human tumors, possesses oncogenic potential, and anti-apoptotic activities. Following phosphorylation at Y705, STAT3 dimerizes, translocates to the nucleus and binds DNA. Transcriptional activation seems to be regulated by phosphorylation at Ser 727. STAT3 exists as an alpha form (86kD) and a beta form (79kD) that lacks a 50 amino acid domain containing Ser 727.

Synonyms:

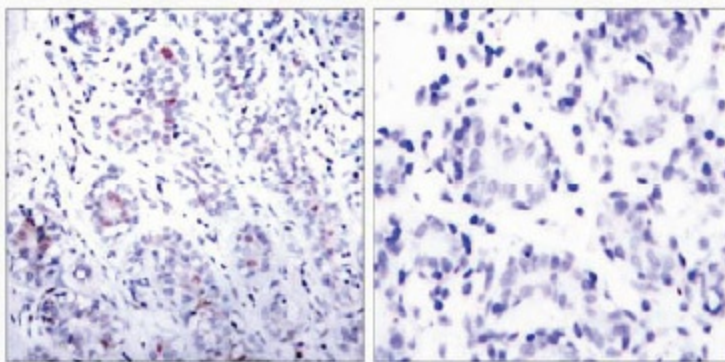
STAT-3, Acute-phase response factor, APRF

Note:

Molecular Weight: 88 kDa

Product images:


Western blot analysis of extracts from HeLa cells using STAT3 antibody.



Immunohistochemical analysis of paraffin-embedded human breast carcinoma tissue using STAT3 antibody (left) or the same antibody preincubated with blocking peptide (right).

Peptide - +