

Product datasheet for **AP02585PU-S**

STAT1 Rabbit Polyclonal Antibody

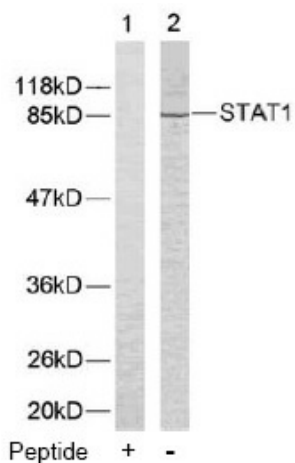
Product data:

Product Type:	Primary Antibodies
Applications:	IHC, WB
Recommended Dilution:	Western Blot: 1/500 - 1/1000. Immunohistochemistry: 1/50 - 1/100.
Reactivity:	Human, Mouse
Host:	Rabbit
Clonality:	Polyclonal
Immunogen:	The antiserum was produced against synthesized non-phosphopeptide derived from human STAT1 around the phosphorylation site of tyrosine 701(T-G-YP-I-K).
Specificity:	STAT1 antibody detects endogenous levels of total STAT1 protein.
Formulation:	PBS(without Mg ²⁺ and Ca ²⁺), pH 7.4 containing 150mM NaCl, 0.02% sodium azide and 50% glycerol State: Aff - Purified State: Liquid purified IgG fraction
Concentration:	lot specific
Purification:	Affinity-chromatography using epitope-specific immunogen
Conjugation:	Unconjugated
Storage:	Store the antibody at -20°C. Avoid repeated freezing and thawing.
Stability:	Shelf life: one year from despatch.
Gene Name:	signal transducer and activator of transcription 1
Database Link:	Entrez Gene 6772 Human P42224
Synonyms:	DKFZp686B04100; ISGF-3; OTTHUMP00000205845; STAT91

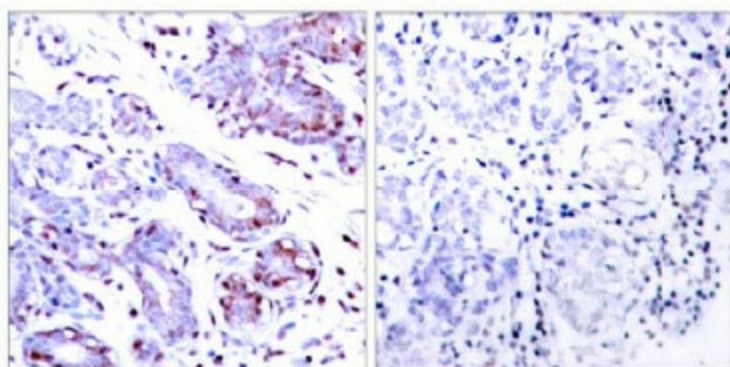


[View online »](#)

Product images:



Western blot analysis of extracts from COLO205 cells using STAT1 antibody.



Peptide - +

Immunohistochemical analysis of paraffin-embedded human breast carcinoma tissue using STAT1 antibody.