

Product datasheet for **AP02585PU-N**

STAT1 Rabbit Polyclonal Antibody

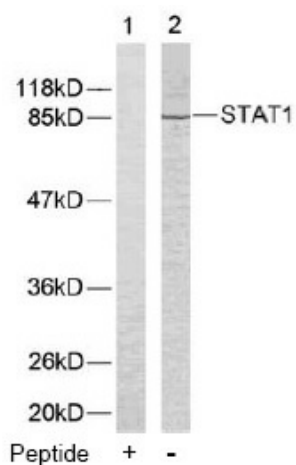
Product data:

| | |
|-----------------------|--|
| Product Type: | Primary Antibodies |
| Applications: | IHC, WB |
| Recommended Dilution: | Western Blot: 1/500 - 1/1000. Immunohistochemistry: 1/50 - 1/100. |
| Reactivity: | Human, Mouse |
| Host: | Rabbit |
| Clonality: | Polyclonal |
| Immunogen: | The antiserum was produced against synthesized non-phosphopeptide derived from human STAT1 around the phosphorylation site of tyrosine 701(T-G-YP-I-K). |
| Specificity: | STAT1 antibody detects endogenous levels of total STAT1 protein. |
| Formulation: | PBS(without Mg ²⁺ and Ca ²⁺), pH 7.4 containing 150mM NaCl, 0.02% sodium azide and 50% glycerol State: Aff - Purified State: Liquid purified IgG fraction |
| Concentration: | lot specific |
| Purification: | Affinity-chromatography using epitope-specific immunogen |
| Conjugation: | Unconjugated |
| Storage: | Store the antibody at -20°C. Avoid repeated freezing and thawing. |
| Stability: | Shelf life: one year from despatch. |
| Gene Name: | signal transducer and activator of transcription 1 |
| Database Link: | Entrez Gene 6772 Human P42224 |
| Synonyms: | DKFZp686B04100; ISGF-3; OTTHUMP00000205845; STAT91 |

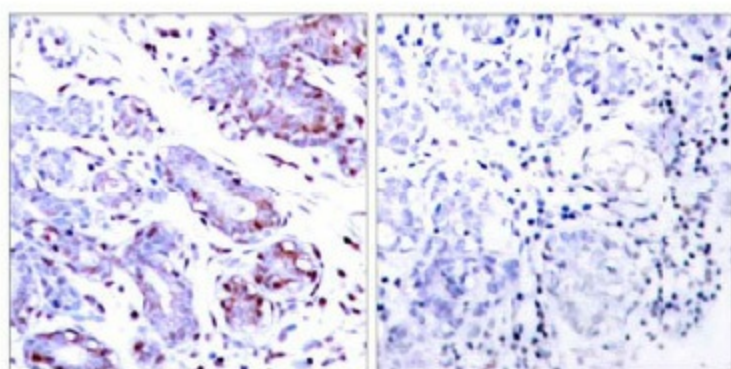


[View online »](#)

Product images:



Western blot analysis of extracts from COLO205 cells using STAT1 antibody.



Peptide - +

Immunohistochemical analysis of paraffin-embedded human breast carcinoma tissue using STAT1 antibody.