

Product datasheet for **AP02583PU-N**

GATA1 Rabbit Polyclonal Antibody

Product data:

Product Type:	Primary Antibodies
Applications:	IF, IHC, WB
Recommended Dilution:	Western Blot: 1/500-1/1000. Incubate membrane with diluted antibody in 5% nonfat milk, 1xTBS, 0.1% Tween-20 at 4°C with gentle shaking, overnight. Immunofluorescence: 1/100-1/200. Immunohistochemistry on Paraffin Sections: 1/50-1/100.
Reactivity:	Human, Mouse, Rat
Host:	Rabbit
Clonality:	Polyclonal
Immunogen:	Peptide sequence around aminos acids 140~144 (R-L-SP-P-D) derived from Human GATA1.
Specificity:	This antibody detects endogenous levels of total GATA1 protein.
Formulation:	PBS (without Mg ²⁺ and Ca ²⁺), pH 7.4, containing 150 mM NaCl, 0.02% Sodium Azide and 50% glycerol. State: Aff - Purified State: Liquid purified Ig fraction.
Concentration:	lot specific
Purification:	Affinity Chromatography using epitope-specific immunogen
Conjugation:	Unconjugated
Storage:	Store the antibody (in aliquots) at -20°C. Avoid repeated freezing and thawing.
Stability:	Shelf life: One year from despatch.
Gene Name:	GATA binding protein 1
Database Link:	Entrez Gene 2623 Human P15976



[View online »](#)

Background:

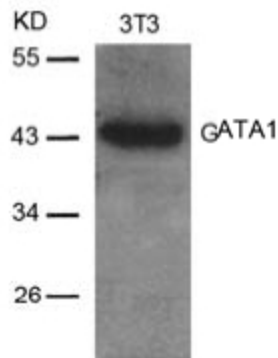
GATA1 (Globin transcription factor 1) is a Cys2/Cys2 zinc finger DNA binding protein that is expressed primarily in erythroid, megakaryocytic, mast cells and eosinophilic cells. It belongs to the GATA family of transcription factors. GATA1 is a transcriptional activator which probably serves as a general switch factor for erythroid development. It binds to DNA sites with the consensus sequence [AT]GATA[AG] within regulatory regions of globin genes and of other genes expressed in erythroid cells. The protein also plays an important role in erythroid development by regulating the switch from fetal hemoglobin production to adult hemoglobin.

Synonyms:

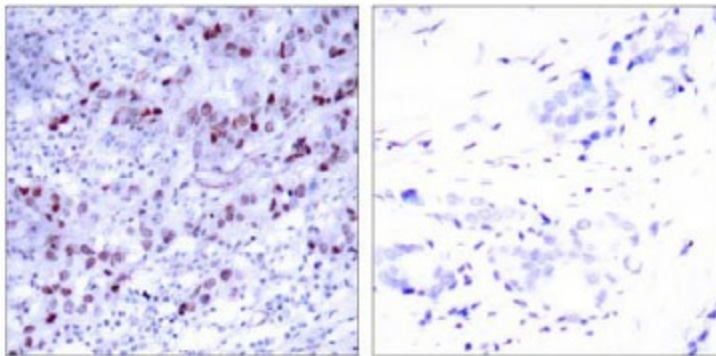
GATA-1, ERYF1, GF1, Erythroid transcription factor, Eryf1, GATA-binding factor 1, GATA-1, GF-1, NF-E1 DNA-binding protein

Note:

Molecular Weight: 43 kDa

Product images:


Western blot analysis of extracts from 3T3 cells using GATA1 antibody.

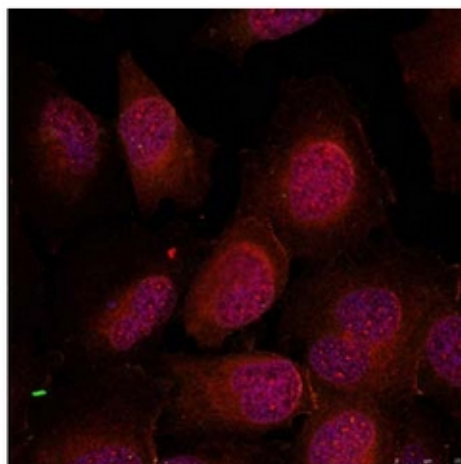


Peptide

-

+

Immunohistochemical analysis of paraffin-embedded human breast carcinoma tissue using GATA-1 antibody (Left) or the same antibody preincubated with blocking peptide (Right).



Immunofluorescence staining of methanol-fixed HeLa cells using GATA1 antibody.