

Product datasheet for **AP02582PU-N**

MEF2A Rabbit Polyclonal Antibody

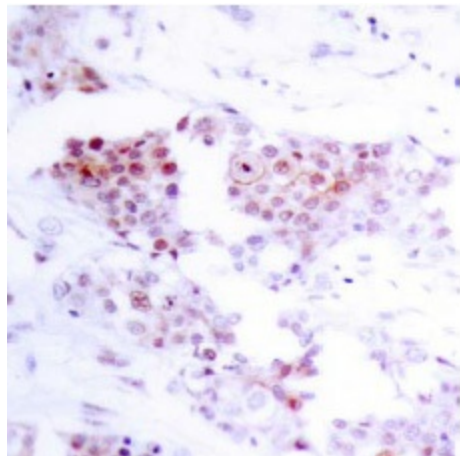
Product data:

| | |
|-----------------------|--|
| Product Type: | Primary Antibodies |
| Applications: | IHC |
| Recommended Dilution: | Immunohistochemistry: 1:50~1:100. |
| Reactivity: | Human, Mouse |
| Host: | Rabbit |
| Clonality: | Polyclonal |
| Immunogen: | The antiserum was produced against synthesized non-phosphopeptide derived from human MEF2A around the phosphorylation site of threonine 319 (V-T-TP-P-S). |
| Specificity: | MEF2A antibody detects endogenous levels of total MEF2A protein. |
| Formulation: | PBS(without Mg ²⁺ and Ca ²⁺), pH 7.4 containing 150mM NaCl, 0.02% sodium azide and 50% glycerol State: Aff - Purified State: Liquid purified IgG |
| Concentration: | lot specific |
| Purification: | Affinity-chromatography using epitope-specific immunogen |
| Conjugation: | Unconjugated |
| Storage: | Store the antibody at -20°C. Avoid repeated freezing and thawing. |
| Stability: | Shelf life: one year from despatch. |
| Gene Name: | myocyte enhancer factor 2A |
| Database Link: | Entrez Gene 4205 Human Q02078 |
| Background: | MEF2A (myocyte specific enhancer factor 2) belongs to a family of DNA binding regulatory proteins. The MEF2 family of transcription factors is highly expressed in the brain when neurons undergo dendritic maturation and synapse formation. MEF2A is especially abundant in granule neurons of the cerebellar cortex throughout the period of synaptogenesis. MEF2A also has key roles in cardiac and skeletal muscle development. |
| Synonyms: | MEF2, Myocyte-specific enhancer factor 2A |



[View online »](#)

Product images:



Immunohistochemical analysis of paraffin-embedded human breast carcinoma tissue using MEF2A antibody.