

Product datasheet for **AP02581PU-S**

MEF2A Rabbit Polyclonal Antibody

Product data:

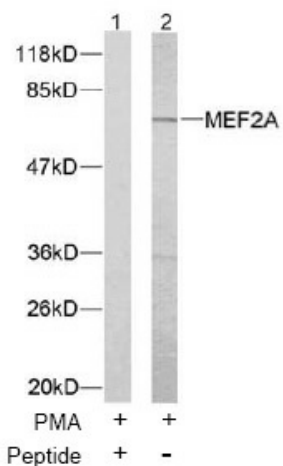
Product Type:	Primary Antibodies
Applications:	IHC, WB
Recommended Dilution:	Western Blot: 1:500~1:1000. Immunohistochemistry: 1:50~1:100.
Reactivity:	Human, Mouse
Host:	Rabbit
Clonality:	Polyclonal
Immunogen:	The antiserum was produced against synthesized non-phosphopeptide derived from human MEF2A around the phosphorylation site of threonine 312 (L-A-TP-P-V).
Specificity:	MEF2A antibody detects endogenous levels of total MEF2A protein.
Formulation:	PBS(without Mg ²⁺ and Ca ²⁺), pH 7.4 containing 150mM NaCl, 0.02% sodium azide and 50% glycerol State: Aff - Purified State: Liquid purified IgG
Concentration:	lot specific
Purification:	Affinity-chromatography using epitope-specific immunogen
Conjugation:	Unconjugated
Storage:	Store the antibody at -20°C. Avoid repeated freezing and thawing.
Stability:	Shelf life: one year from despatch.
Gene Name:	myocyte enhancer factor 2A
Database Link:	Entrez Gene 4205 Human Q02078
Background:	MEF2A (myocyte specific enhancer factor 2) belongs to a family of DNA binding regulatory proteins. The MEF2 family of transcription factors is highly expressed in the brain when neurons undergo dendritic maturation and synapse formation. MEF2A is especially abundant in granule neurons of the cerebellar cortex throughout the period of synaptogenesis. MEF2A also has key roles in cardiac and skeletal muscle development.



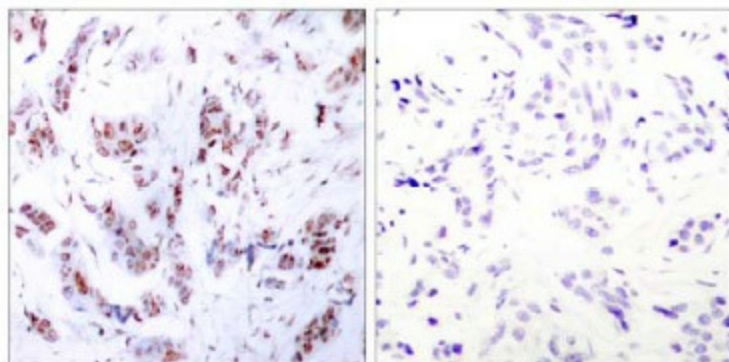
[View online »](#)

Synonyms: MEF2, Myocyte-specific enhancer factor 2A

Product images:



Western blot analysis of extracts from NIH/3T3 cells using MEF2A antibody.



Peptide - +

Immunohistochemical analysis of paraffin-embedded human breast carcinoma tissue using MEF2A antibody.