

Product datasheet for **AP02579PU-N**

ELK1 Rabbit Polyclonal Antibody

Product data:

Product Type:	Primary Antibodies
Applications:	IF, IHC, WB
Recommended Dilution:	Immunohistochemistry on paraffin sections: 1/50 - 1/100. Immunofluorescence: 1/100 - 1/200. Western Blot: 1/500 - 1/1000; Incubate membrane with diluted antibody in 5% nonfat milk, 1X TBS, 0,1% Tween-20 at 4°C with gentle shaking, overnight.
Reactivity:	Human, Mouse
Host:	Rabbit
Clonality:	Polyclonal
Immunogen:	Synthetic non-phosphopeptide derived from human Elk-1 around the phosphorylation site of serine 389 (P-R-SP-P-A).
Specificity:	Elk-1 antibody detects endogenous levels of total Elk-1 protein.
Formulation:	PBS(without Mg ²⁺ and Ca ²⁺), pH 7.4 containing 150mM NaCl, 0.02% sodium azide and 50% glycerol State: Aff - Purified State: Liquid purified IgG fraction
Concentration:	lot specific
Purification:	Affinity chromatography
Conjugation:	Unconjugated
Storage:	Store the antibody at -20°C. Avoid repeated freezing and thawing.
Stability:	Shelf life: one year from despatch.
Gene Name:	ELK1, ETS transcription factor
Database Link:	Entrez Gene 2002 Human P19419



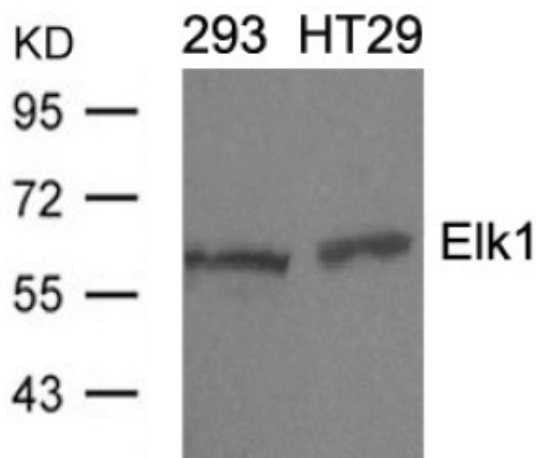
[View online »](#)

Background:

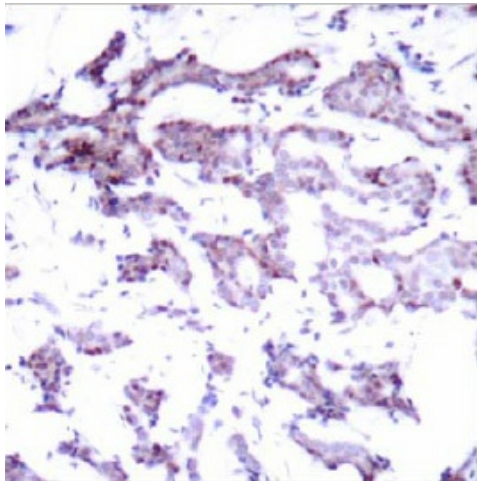
The transcription factor Elk1 is a component of the ternary complex that binds the serum response element (SRE) and mediates gene activity in response to serum and growth factors. Elk1 is phosphorylated by MAP kinase pathways at a cluster of S/T motifs at its C terminus. Phosphorylation at these sites, particularly Ser383, is critical for transcriptional activation by Elk1. Elk1 appears to be a direct target of activated MAP kinase. Biochemical studies indicate that Elk1 is a good substrate for MAP kinase, the kinetics of Elk1 phosphorylation and activation correlate with MAP kinase activity, and interfering mutants of MAP kinase block Elk1 activation in vivo. More recent studies have shown that Elk1 (Ser383) is also a target of the Stress Activated Kinase SAPK/JNK. Phosphorylation of Elk1 has also been implicated in synaptic plasticity in the adult hippocampus.

Synonyms:

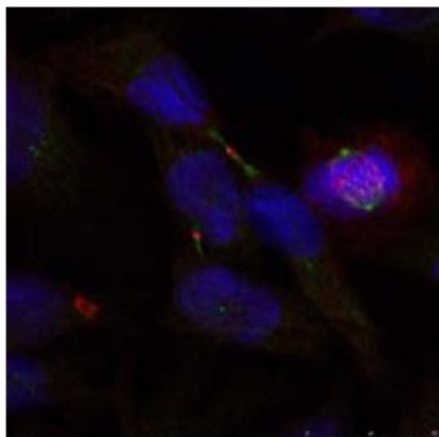
Elk-1

Product images:

Western blot analysis of extracts from 293 and HT29 cells using Elk1 antibody



Immunohistochemical analysis of paraffin-embedded human breast carcinoma tissue using Elk-1 antibody.



Immunofluorescence staining of methanol-fixed HeLa cells using Elk1 antibody