

Product datasheet for **AP02569PU-S**

JUNB Rabbit Polyclonal Antibody

Product data:

Product Type:	Primary Antibodies
Applications:	IHC, WB
Recommended Dilution:	Western Blot: 1:500~1:1000. Immunohistochemistry: 1:50~1:100.
Reactivity:	Human
Host:	Rabbit
Clonality:	Polyclonal
Immunogen:	The antiserum was produced against synthesized non-phosphopeptide derived from human JunB around the phosphorylation site of serine 259 (P-V-SP-P-I).
Specificity:	JunB antibody detects endogenous levels of total JunB protein.
Formulation:	PBS(without Mg ²⁺ and Ca ²⁺), pH 7.4 containing 150mM NaCl, 0.02% sodium azide and 50% glycerol State: Aff - Purified State: Liquid purified IgG
Concentration:	lot specific
Purification:	The antibody was affinity-purified from rabbit antiserum by affinity-chromatography using epitope-specific immunogen.
Conjugation:	Unconjugated
Storage:	Store the antibody at -20°C. Avoid repeated freezing and thawing.
Stability:	Shelf life: one year from despatch.
Gene Name:	JunB proto-oncogene, AP-1 transcription factor subunit
Database Link:	Entrez Gene 3726 Human P17275



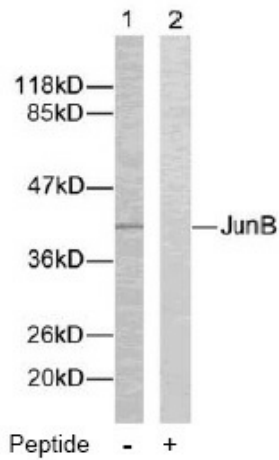
[View online »](#)

Background:

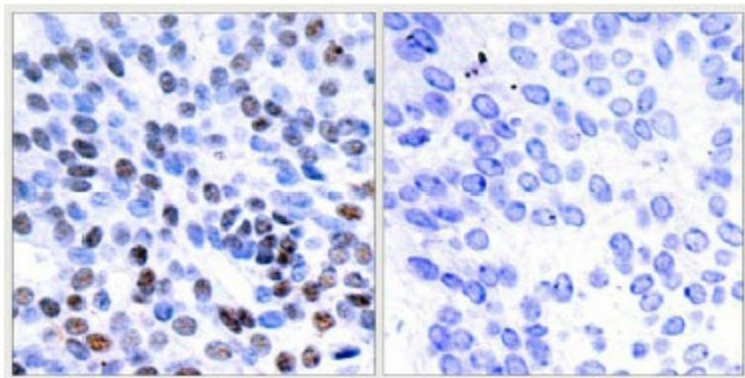
The cJun proto-oncogene was first identified as the cellular homolog of the avian sarcoma virus vjun oncogene. JunB and JunD have been shown to be almost identical to cJun in their C terminal regions, which are involved in dimerization and DNA binding, whereas their N terminal domains, which are involved in transcriptional activation, diverge. JunB is a transcription factor involved in regulating gene activity following the primary growth factor response. It binds to the DNA sequence 5'-TGA[CG]TCA-3'.

Synonyms:

JUNB

Product images:


Western blot analysis of extracts from HeLa cells using JunB antibody.



Peptide - +

Immunohistochemical analysis of paraffin-embedded human breast carcinoma tissue using JunB antibody.