

Product datasheet for **AP02566PU-S**

c-Jun (JUN) non phospho Thr239 Rabbit Polyclonal Antibody

Product data:

| | |
|-----------------------|-------------------------------------------------------------------------------------------------------------------------------------------------------------------------------|
| Product Type: | Primary Antibodies |
| Applications: | IHC, WB |
| Recommended Dilution: | Western Blot: 1:500~1:1000. Immunohistochemistry: 1:50~1:100. |
| Reactivity: | Human, Mouse |
| Host: | Rabbit |
| Clonality: | Polyclonal |
| Immunogen: | The antiserum was produced against synthesized non-phosphopeptide derived from human c-Jun around the phosphorylation site of threonine 239 (G-E-TP-P-P). |
| Specificity: | c-Jun antibody detects endogenous levels of total c-Jun protein. |
| Formulation: | PBS(without Mg ²⁺ and Ca ²⁺), pH 7.4 containing 150mM NaCl, 0.02% sodium azide and 50% glycerol State: Aff - Purified State: Liquid purified IgG |
| Concentration: | lot specific |
| Purification: | The antibody was affinity-purified from rabbit antiserum by affinity-chromatography using epitope-specific immunogen. |
| Conjugation: | Unconjugated |
| Storage: | Store the antibody at -20°C. Avoid repeated freezing and thawing. |
| Stability: | Shelf life: one year from despatch. |
| Gene Name: | Jun proto-oncogene, AP-1 transcription factor subunit |
| Database Link: | Entrez Gene 3725 Human P05412 |



[View online »](#)

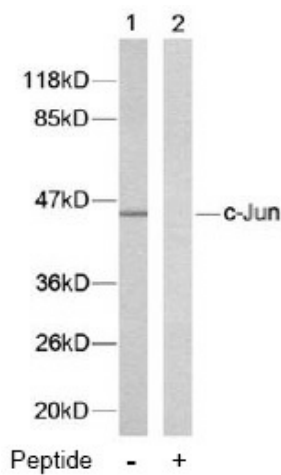
Background:

The human protooncogene JUN is the putative transforming gene of avian sarcoma virus 17, and it encodes a protein which is highly homologous to the viral protein. cJun (previously known as the Fos binding protein p39) and c Fos form a complex in the nucleus. AP 1 (activating protein 1) is a collective term referring to these dimeric transcription factors composed of Jun, Fos or ATF subunits that bind to a common DNA site, the AP1 binding site. AP 1 proteins, mostly the Jun group, regulate the expression and function of cell cycle regulators such as Cyclin D1, p53, p21 (cip1/waf1), p19 (ARF) and p16. Fos and Jun proto oncogene expression is induced transiently by a variety of extracellular stimuli associated with mitogenesis, differentiation processes or depolarization of neurons. JUN has been mapped to 1p32 to p31, a chromosomal region involved in both translocations and deletions in human malignancies.

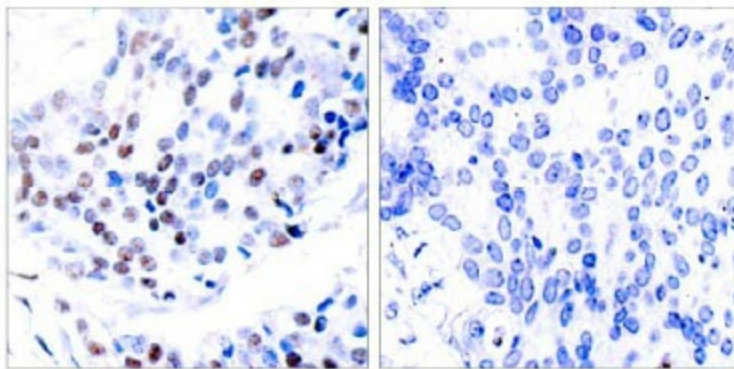
Synonyms:

Transcription factor AP1

Product images:



Western blot analysis of extracts from HeLa cells using c-Jun antibody.



Peptide - +

Immunohistochemical analysis of paraffin-embedded human breast carcinoma tissue using c-Jun antibody.