

## Product datasheet for **AP02559PU-S**

### **NFkB p100 / p52 (NFKB2) Rabbit Polyclonal Antibody**

#### **Product data:**

<b>Product Type:</b>	Primary Antibodies
<b>Applications:</b>	IHC, WB
<b>Recommended Dilution:</b>	Western Blot: 1/500~1/1000. Immunohistochemistry: 1/50~1/100.
<b>Reactivity:</b>	Human, Mouse
<b>Host:</b>	Rabbit
<b>Clonality:</b>	Polyclonal
<b>Immunogen:</b>	This antiserum was produced against synthesized non-phosphopeptide derived from human NFkB-p100/p52 around aa 868-872 (Y-G-S-Q-S).
<b>Specificity:</b>	This antibody (AP02559PU) detects endogenous levels of total NF-kB p100/p52 protein.
<b>Formulation:</b>	PBS (without Mg <sup>2+</sup> and Ca <sup>2+</sup> ), pH 7.4, 150 mM NaCl, 0.02% Sodium Azide as preservative and 50% Glycerol as stabilizer. State: Aff - Purified State: Liquid purified Ig fraction.
<b>Concentration:</b>	lot specific
<b>Purification:</b>	Immunoaffinity Chromatography using epitope-specific immunogen.
<b>Conjugation:</b>	Unconjugated
<b>Storage:</b>	Store the antibody (in aliquots) at -20°C. Avoid repeated freezing and thawing.
<b>Stability:</b>	Shelf life: One year from despatch.
<b>Gene Name:</b>	nuclear factor kappa B subunit 2
<b>Database Link:</b>	<a href="#">Entrez Gene 4791 Human Q00653</a>



[View online »](#)

**Background:**

NFkB is formed through the association of multiple subunits, either as a homodimer or heterodimer. Subunits have been identified as p50 (NFkB1), p65 (RelA), c-Rel, RelB and p52 (NFkB2). The classic NFkB form exists as a p50-p65 heterodimer and predominates in many cell types. Many of the possible combinatorial forms of homo- and heterodimers have been identified and growing evidence indicates that different forms of NFkB have different functions in cells. Interestingly, both the p50 and p52 subunits are derived from the precursor proteins p105 and p100 respectively, that each contain multiple copies of the so called ankyrin repeat at their C termini. Nuclear translocation of NFkB is confirmed by the use of electrophoretic mobility shift assays or by immunoblotting with nuclear extracts. The subunit composition of NFkB is confirmed by the use of antibodies that "supershift" the DNA/protein complex.

**Synonyms:**

LYT10, KBF2, H2TF1, NF-kB p100, NF-kB p52, NF kappa B

**Product images:**

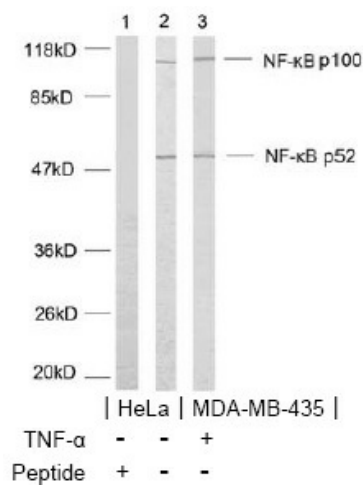


Figure 2. Western blot analysis using NFkB-p100/p52 antibody.

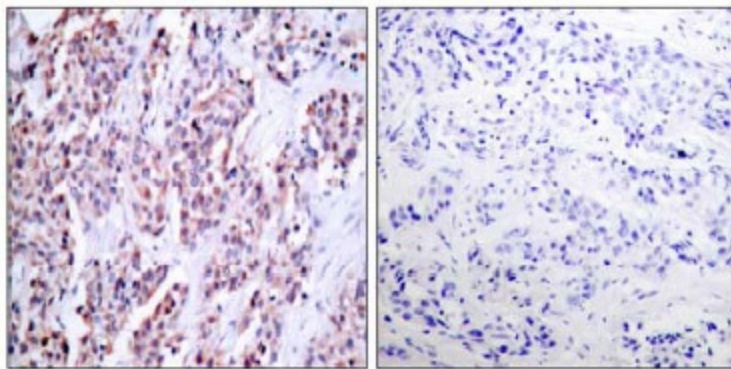


Figure 1. Immunohistochemical analysis of paraffin-embedded human breast carcinoma tissue using NFkB-p100/p52 antibody.

Peptide - +