

Product datasheet for **AP02552PU-N**

MEK2 (MAP2K2) Rabbit Polyclonal Antibody

Product data:

Product Type:	Primary Antibodies
Applications:	IHC, WB
Recommended Dilution:	Western Blot: 1/500-1/1000. Immunohistochemistry on Paraffin Sections: 1/50-1/100.
Reactivity:	Human, Mouse, Rat
Host:	Rabbit
Clonality:	Polyclonal
Immunogen:	Peptide sequence around aa.392~396 (P-G-T-P-T) derived from Human MEK-2).
Specificity:	MEK2 antibody detects endogenous levels of total MEK2 protein.
Formulation:	PBS(without Mg ²⁺ and Ca ²⁺), pH 7.4 containing 150mM NaCl, 0.02% sodium azide and 50% glycerol State: Aff - Purified State: Liquid purified IgG fraction
Concentration:	lot specific
Purification:	The antibody was affinity-purified from rabbit antiserum by affinity-chromatography using epitope-specific immunogen.
Conjugation:	Unconjugated
Storage:	Upon receipt, store undiluted (in aliquots) at -20°C. Avoid repeated freezing and thawing.
Stability:	Shelf life: one year from despatch.
Predicted Protein Size:	44 kDa
Gene Name:	mitogen-activated protein kinase kinase 2
Database Link:	Entrez Gene 5605 Human P36507



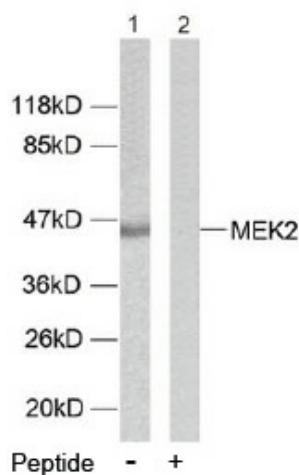
[View online »](#)

Background:

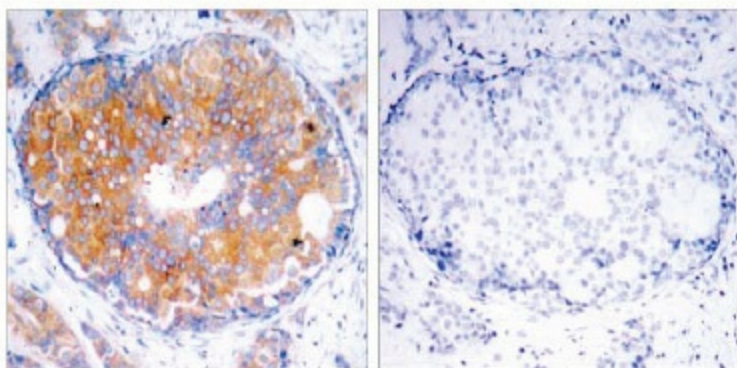
Microtubule associated protein kinase kinase 2 (MEK2 or MAPKK2) is a member of a family of tyrosine/threonine protein kinases that activate the ERK 1 & 2/MAPK enzymes by phosphorylating both residues within the threonine/glutamic acid/tyrosine (TEY) motif in the activation loop. MEK 1 & 2 are also activated by dual phosphorylation, which occurs on serines 218 and 222, in the activation loop of the MEKs. Threonine 394 of MEK2 is phosphorylated by ERK 2, which serves as a negative feedback loop by suppressing activation of MEK2.

Synonyms:

MAP kinase kinase 2, ERK activator kinase 2, MAPK/ERK kinase 2, MEK2, MKK2, MAP kinase kinase 2

Product images:


Western blot analysis of extracts from ovary cancer cells using MEK2 antibody.



Immunohistochemical analysis of paraffin-embedded human breast carcinoma tissue using MEK2 antibody.