

Product datasheet for **AP02551PU-N**

GSK3 alpha (GSK3A) Rabbit Polyclonal Antibody

Product data:

Product Type:	Primary Antibodies
Applications:	IF, IHC, WB
Recommended Dilution:	Western Blot: 1/500-1/1000. Immunohistochemistry on Paraffin Sections: 1/50-1/100. Immunofluorescence: 1/100-1/200.
Reactivity:	Human, Mouse, Rat
Host:	Rabbit
Clonality:	Polyclonal
Immunogen:	Synthetic non-phosphopeptide derived from human GSK3alpha around the phosphorylation site of serine 21 (T-S-SP-F-A).
Specificity:	This Antibody detects endogenous levels of total GSK3 α protein.
Formulation:	PBS(without Mg ²⁺ and Ca ²⁺), pH 7.4 containing 150mM NaCl, 0.02% Sodium Azide and 50% Glycerol State: Aff - Purified State: Liquid purified IgG fraction
Concentration:	lot specific
Purification:	Affinity chromatography
Conjugation:	Unconjugated
Storage:	Upon receipt, store undiluted (in aliquots) at -20°C. Avoid repeated freezing and thawing.
Stability:	Shelf life: one year from despatch.
Gene Name:	glycogen synthase kinase 3 alpha
Database Link:	Entrez Gene 2931 Human P49840



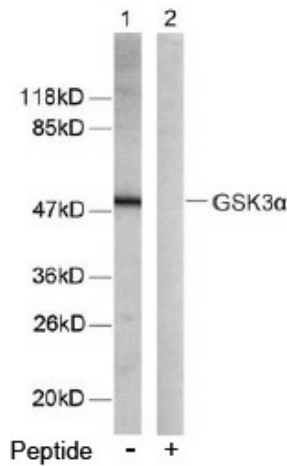
[View online »](#)

Background:

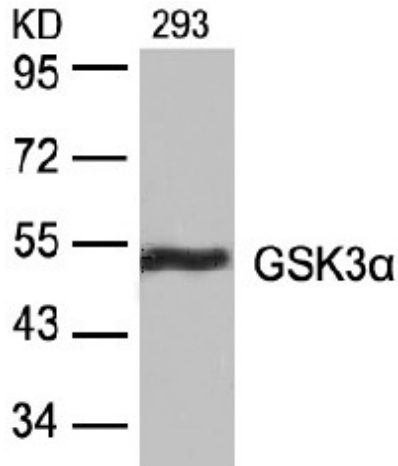
Glycogen synthase kinase 3 alpha belongs to the Ser/Thr family of protein kinases, Cdc2/cdkx subfamily; GSK3 subsubfamily. It is implicated in the hormonal control of several regulatory proteins including glycogen synthase, myb, and the transcription factor c jun. GSK3 phosphorylates glycogen synthase and thereby inactivates it. Insulin stimulates the dephosphorylation of glycogen synthase at the sites phosphorylated by GSK3 and subsequently inhibits GSK3 acutely leading to the stimulation of glycogen synthesis. GSK3 signaling is performed by two isoforms, GSK3 alpha and GSK3 beta. The two isoforms share 97% sequence similarity within their catalytic domains. GSK3 has also been shown to play a role in protein synthesis, cell adhesion, cell proliferation, cell differentiation, microtubule dynamics and cell motility.

Synonyms:

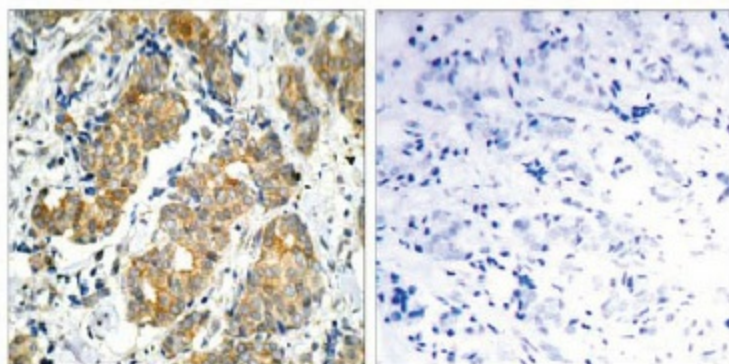
Glycogen synthase kinase-3 alpha, GSK3A, GSK-3 alpha, Factor A

Product images:


Western Blot analysis of extracts from 293 cells using GSK3alpha antibody



Western blot analysis of extracts from ovary cancer cells using GSK3a antibody

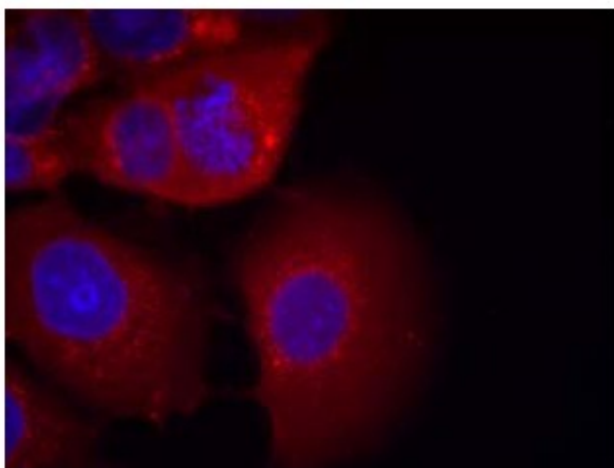


Peptide

-

+

Immunohistochemical analysis of paraffin-embedded human breast carcinoma tissue using GSK3a antibody.



Immunofluorescence staining of methanol fixed MCF7 cells using GSK3 alpha antibody