

## Product datasheet for **AP02550PU-S**

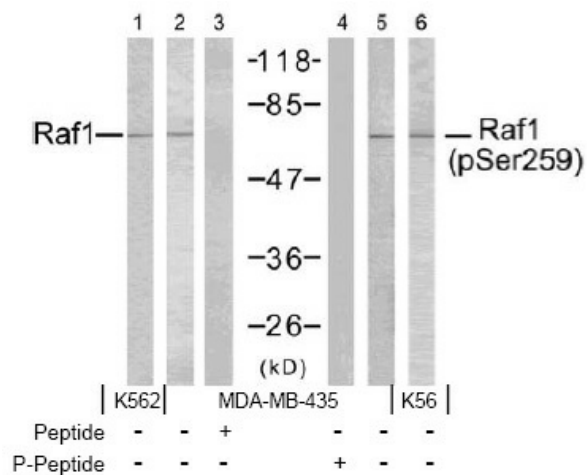
### RAF1 Rabbit Polyclonal Antibody

#### Product data:

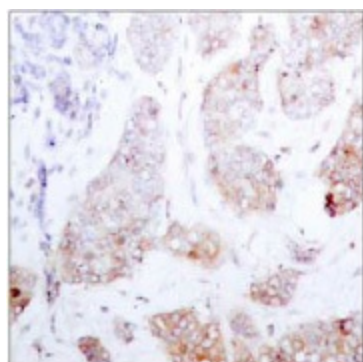
Product Type:	Primary Antibodies
Applications:	IHC, WB
Recommended Dilution:	Western Blot: 1:500~1:1000. Immunohistochemistry on paraffin sections: 1:50~1:100.
Reactivity:	Human, Mouse, Rat
Host:	Rabbit
Clonality:	Polyclonal
Immunogen:	The antiserum was produced against synthesized non-phosphopeptide derived from human Raf-1 around the phosphorylation site of serine 259 (S-T-SP-T-P).
Specificity:	Raf-1 antibody detects endogenous levels of total Raf-1 protein.
Formulation:	PBS (without Mg <sup>2+</sup> and Ca <sup>2+</sup> ), pH 7.4 containing 150mM NaCl, 0.02% sodium azide and 50% glycerol State: Aff - Purified State: Liquid purified IgG
Concentration:	lot specific
Purification:	The antibody was affinity-purified from rabbit antiserum by affinity-chromatography using epitope-specific immunogen.
Conjugation:	Unconjugated
Storage:	Store the antibody at -20°C. Avoid repeated freezing and thawing.
Stability:	Shelf life: one year from despatch.
Gene Name:	Raf-1 proto-oncogene, serine/threonine kinase
Database Link:	<a href="#">Entrez Gene 5894 Human P04049</a>
Synonyms:	C-RAF, Raf-1, cRaf



[View online »](#)

**Product images:**


Western blot analysis of extracts using Raf-1 antibody (Line 1, 2, and 3) and Raf-1 (pSer259) antibody (Line 4, 5, and 6).



Immunohistochemical analysis of paraffin-embedded human breast carcinoma tissue using Raf-1 antibody.