

Product datasheet for **AP02546PU-S**

GSK3 beta (GSK3B) Rabbit Polyclonal Antibody

Product data:

Product Type:	Primary Antibodies
Applications:	IF, IHC, WB
Recommended Dilution:	Western Blot: 1/500 - 1/1000; Incubate membrane with diluted antibody in 5% nonfat milk, 1X TBS, 0,1% Tween-20 at 4°C with gentle shaking, overnight. Immunohistochemistry on paraffin sections: 1/50 - 1/100. Immunofluorescence: 1/100 - 1/200.
Reactivity:	Human, Mouse
Host:	Rabbit
Clonality:	Polyclonal
Immunogen:	Synthetic non-phosphopeptide derived from human GSK3-beta around the phosphorylation site of serine 9 (T-T-SP-F-A).
Specificity:	This antibody detects endogenous levels of total GSK3-beta protein and may cross-react with the GSK3-alpha due to high sequence homology.
Formulation:	PBS (without Mg ²⁺ and Ca ²⁺), pH 7.4 containing 150mM NaCl, 0.02% Sodium Azide and 50% glycerol State: Aff - Purified State: Liquid purified IgG fraction
Concentration:	lot specific
Purification:	Affinity Chromatography
Conjugation:	Unconjugated
Storage:	Store the antibody (in aliquots) at -20°C. Avoid repeated freezing and thawing.
Stability:	Shelf life: one year from despatch.
Gene Name:	glycogen synthase kinase 3 beta
Database Link:	Entrez Gene 2932 Human P49841



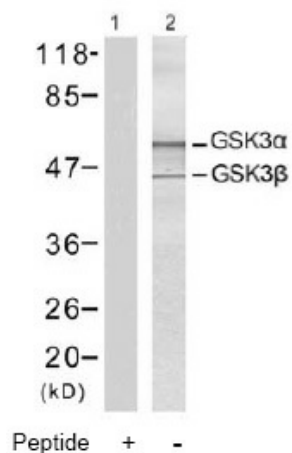
[View online »](#)

Background:

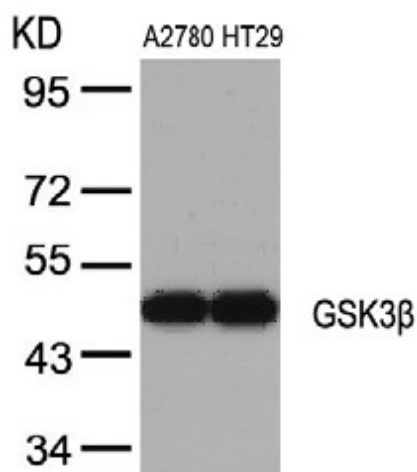
Glycogen synthase kinase 3 (GSK3) is a proline directed serine threonine kinase that was initially identified as a phosphorylating and inactivating glycogen synthase. GSK3 has been implicated in fundamental cell processes such as cell fate determination, metabolism, transcriptional control and oncogenesis. Two isoforms, alpha (GSK3A; OMIM 606784) and beta, show a high degree of amino acid homology within their catalytic domains. GSK3B is involved in energy metabolism, neuronal cell development and body pattern formation.

Synonyms:

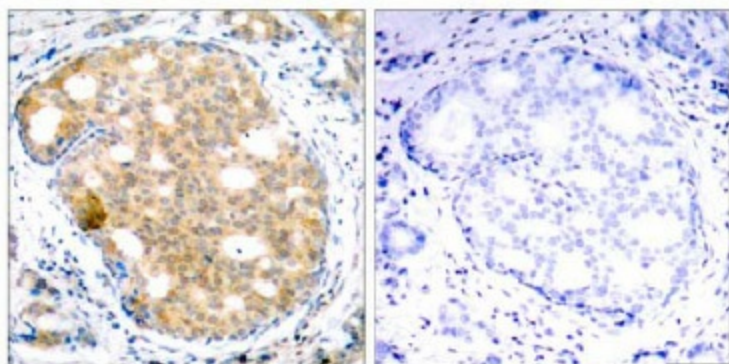
GSK-3 beta, Glycogen synthase kinase-3 beta, GSK3B

Product images:


Western Blot analysis of extracts from A2780 and HT29 cells using GSK3beta antibody



Western blot analysis of extracts from 293 cells treated with 10% serum (30min), using GSK3β antibody.

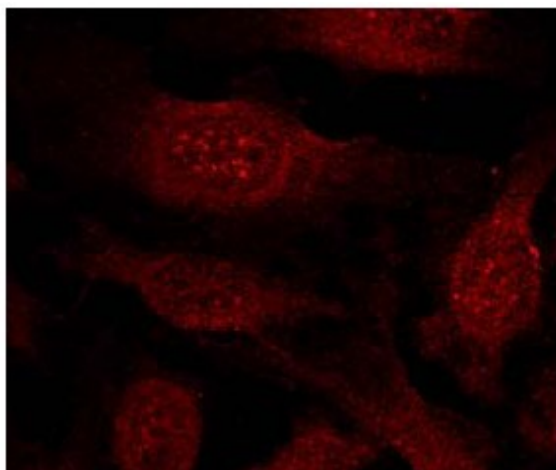


Peptide

-

+

Immunohistochemical analysis of paraffin-embedded human breast carcinoma tissue using GSK3 β antibody.



Immunofluorescence staining of methanol-fixed HeLa cells showing cytoplasmic and nuclear staining using GSK3 beta antibody