

Product datasheet for **AP02546PU-N**

GSK3 beta (GSK3B) Rabbit Polyclonal Antibody

Product data:

| | |
|-----------------------|--|
| Product Type: | Primary Antibodies |
| Applications: | IF, IHC, WB |
| Recommended Dilution: | Western Blot: 1/500 - 1/1000; Incubate membrane with diluted antibody in 5% nonfat milk, 1X TBS, 0,1% Tween-20 at 4°C with gentle shaking, overnight. Immunohistochemistry on paraffin sections: 1/50 - 1/100. Immunofluorescence: 1/100 - 1/200. |
| Reactivity: | Human, Mouse |
| Host: | Rabbit |
| Clonality: | Polyclonal |
| Immunogen: | Synthetic non-phosphopeptide derived from human GSK3-beta around the phosphorylation site of serine 9 (T-T-SP-F-A). |
| Specificity: | This antibody detects endogenous levels of total GSK3-beta protein and may cross-react with the GSK3-alpha due to high sequence homology. |
| Formulation: | PBS (without Mg ²⁺ and Ca ²⁺), pH 7.4 containing 150mM NaCl, 0.02% Sodium Azide and 50% glycerol State: Aff - Purified State: Liquid purified IgG fraction |
| Concentration: | lot specific |
| Purification: | Affinity Chromatography |
| Conjugation: | Unconjugated |
| Storage: | Store the antibody (in aliquots) at -20°C. Avoid repeated freezing and thawing. |
| Stability: | Shelf life: one year from despatch. |
| Gene Name: | glycogen synthase kinase 3 beta |
| Database Link: | Entrez Gene 2932 Human P49841 |



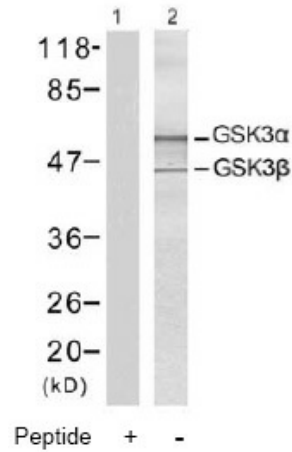
[View online »](#)

Background:

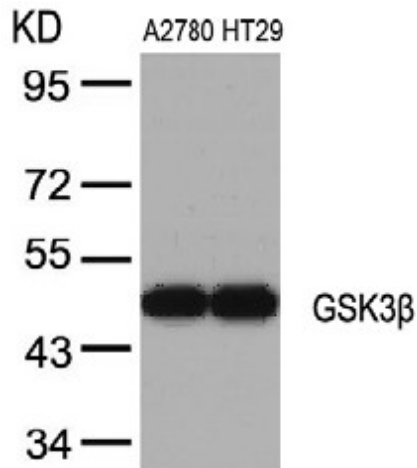
Glycogen synthase kinase 3 (GSK3) is a proline directed serine threonine kinase that was initially identified as a phosphorylating and inactivating glycogen synthase. GSK3 has been implicated in fundamental cell processes such as cell fate determination, metabolism, transcriptional control and oncogenesis. Two isoforms, alpha (GSK3A; OMIM 606784) and beta, show a high degree of amino acid homology within their catalytic domains. GSK3B is involved in energy metabolism, neuronal cell development and body pattern formation.

Synonyms:

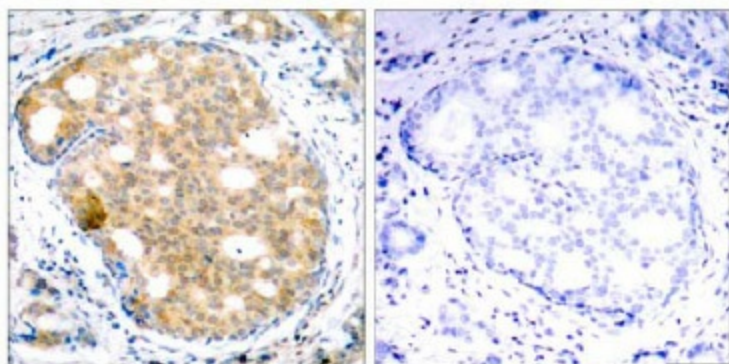
GSK-3 beta, Glycogen synthase kinase-3 beta, GSK3B

Product images:


Western Blot analysis of extracts from A2780 and HT29 cells using GSK3beta antibody



Western blot analysis of extracts from 293 cells treated with 10% serum (30min), using GSK3β antibody.

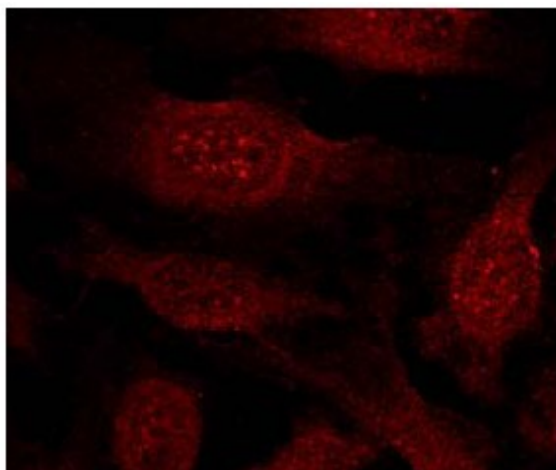


Peptide

-

+

Immunohistochemical analysis of paraffin-embedded human breast carcinoma tissue using GSK3 β antibody.



Immunofluorescence staining of methanol-fixed HeLa cells showing cytoplasmic and nuclear staining using GSK3 beta antibody