

## Product datasheet for **AP02544PU-N**

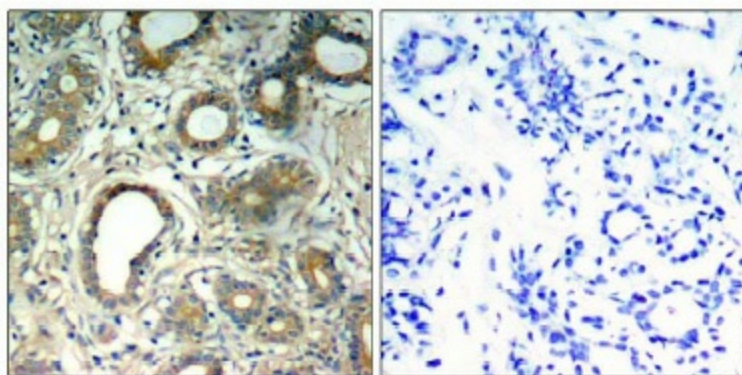
### PTPN11 / PTP2C pTyr580 Rabbit Polyclonal Antibody

#### Product data:

Product Type:	Primary Antibodies
Applications:	IHC
Recommended Dilution:	Immunohistochemistry: 1:50~1:100.
Reactivity:	Human
Host:	Rabbit
Clonality:	Polyclonal
Immunogen:	The antiserum was produced against synthesized phosphopeptide derived from human SHP-2 around the phosphorylation site of tyrosine 580 (R-V-YP-E-N).
Specificity:	SHP-2 antibody detects endogenous levels of SHP-2 only when phosphorylated at tyrosine 580.
Formulation:	PBS(without Mg <sup>2+</sup> and Ca <sup>2+</sup> ), pH 7.4 containing 150mM NaCl, 0.02% sodium azide and 50% glycerol State: Aff - Purified State: Liquid purified IgG
Concentration:	lot specific
Purification:	The antibody was affinity-purified from rabbit antiserum by affinity-chromatography using epitope-specific phosphopeptide. The antibody against non-phosphopeptide was removed by chromatography using non-phosphopeptide corresponding to the phosphorylation site.
Conjugation:	Unconjugated
Storage:	Store the antibody at -20°C. Avoid repeated freezing and thawing.
Stability:	Shelf life: one year from despatch.
Gene Name:	protein tyrosine phosphatase, non-receptor type 11
Database Link:	<a href="#">Entrez Gene 5781 Human Q06124</a>
Synonyms:	SHPTP2, PTP-1D, PTP-2C, SH-PTP2, SHP-2, Shp2, SH-PTP3



[View online »](#)

**Product images:**

P-Peptide

-

+

Immunohistochemical analysis of paraffin-embedded human breast carcinoma tissue, using SHP-2 antibody ([AP02544PU-S]; AP02544PU-N).