

## Product datasheet for **AP02543PU-N**

### PTPN11 / PTP2C pTyr542 Rabbit Polyclonal Antibody

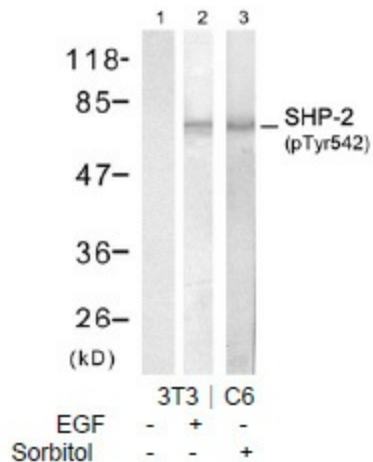
#### Product data:

Product Type:	Primary Antibodies
Applications:	IHC, WB
Recommended Dilution:	Western Blot: 1:500~1:1000. Immunohistochemistry: 1:50~1:100.
Reactivity:	Human, Mouse, Rat
Host:	Rabbit
Clonality:	Polyclonal
Immunogen:	The antiserum was produced against synthesized phosphopeptide derived from human SHP-2 around the phosphorylation site of tyrosine 542 (H-E-YP-T-N).
Specificity:	The antibody detects endogenous levels of SHP only when phosphorylated at tyrosine 542.
Formulation:	PBS (without Mg <sup>2+</sup> and Ca <sup>2+</sup> ), pH 7.4, 150 mM NaCl, 0.02% Sodium Azide and 50% Glycerol State: Aff - Purified State: Liquid purified IgG fraction
Purification:	The antibody was affinity-purified from rabbit antiserum by affinity-chromatography using epitope-specific phosphopeptide. The antibody against non-phosphopeptide was removed by chromatography using non-phosphopeptide corresponding to the phosphorylation site.
Conjugation:	Unconjugated
Storage:	Store the antibody at -20°C. Avoid repeated freezing and thawing.
Stability:	Shelf life: one year from despatch.
Gene Name:	protein tyrosine phosphatase, non-receptor type 11
Database Link:	<a href="#">Entrez Gene 5781 Human Q06124</a>
Synonyms:	SHPTP2, PTP-1D, PTP-2C, SH-PTP2, SHP-2, Shp2, SH-PTP3

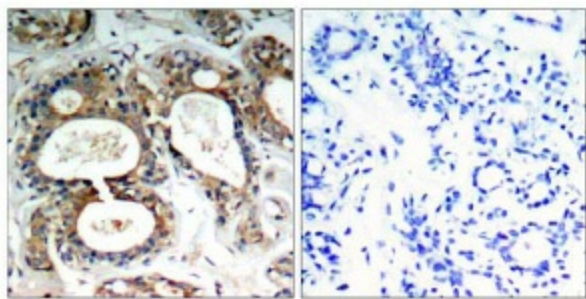


[View online »](#)

Product images:



Western blot analysis of extracts from NIH/3T3 treated with EGF (200 ng/ml, 30 min) or C6 cells treated with Sorbitol (0.4 M, 30 min), using SHP-2 (Phospho-Tyr542) antibody (Lane 1, 2 and 3).



Immunohistochemical analysis of paraffin-embedded human breast carcinoma tissue, using SHP-2 (Phospho-Tyr542) antibody